

WAAS CH <b>86702</b> <b>W16A</b>	APP CRS <b>163°</b>	Rwy Idg <b>4601</b> TDZE <b>16</b> Apt Elev <b>16</b>
--	------------------------	---

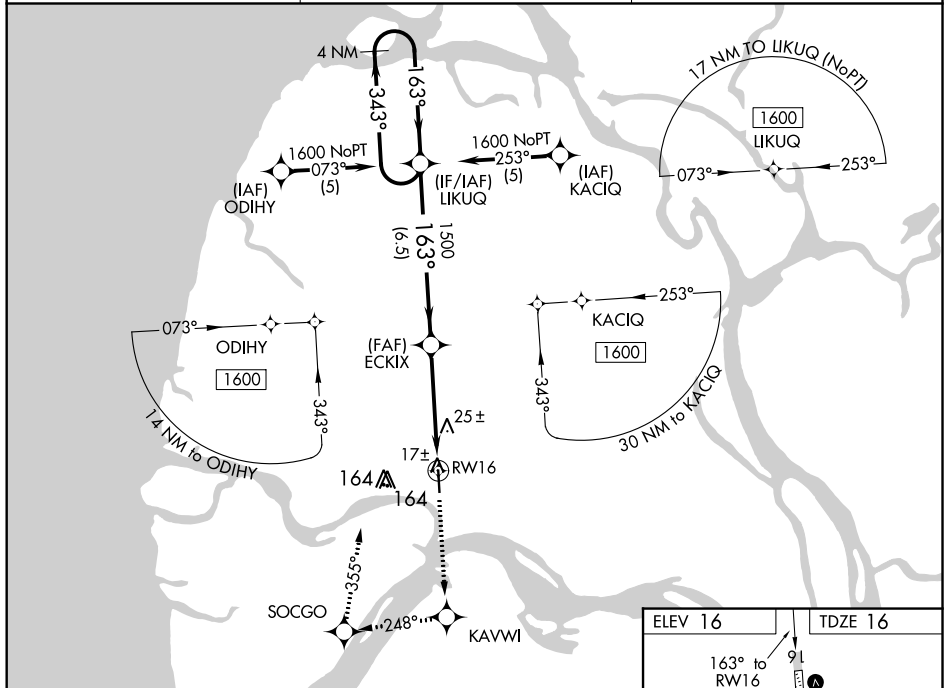
# RNAV (GPS) RWY 16

## EMMONAK (ENM) (PAEM)

**A** If local altimeter setting not received, use St Mary's altimeter setting and increase all DAs 168 feet and all MDAs 180 feet. VDP NA with St Mary's altimeter setting. DME/DME RNP- 0.3 NA. Baro-VNAV NA when using St Mary's altimeter setting. For uncompensated Baro-VNAV systems, LNAV/VNAV NA below -25°C (-13°F) or above 48°C (119°F).

MISSED APPROACH: Climb to 1600 direct KAVWI and right turn via 248° track to SOCGO and right turn via 355° track to UKUQ and hold.

AWOS-3P <b>135.35</b>	ANCHORAGE CENTER <b>124.5</b>	CTAF <b>122.9 0</b>
--------------------------	----------------------------------	------------------------



VGS1 and RNAV glidepath not coincident (VGS1 Angle 3.00/TCH 32).

4 NM Holding Pattern

LIKUQ

ECKIX

1600

343°

163°

1500

GP 3.00° TCH 35

6.5 NM

3.8 NM

0.7 NM

RW16

\* 0.7 NM to RW16

\* RNAV only

CATEGORY	A	B	C	D
LPV DA		266-1	250 (300-1)	
RNAV/ VNAV DA		280-1	264 (300-1)	
RNAV MDA		280-1	264 (300-1)	
CIRCLING	520-1	504 (600-1)	520-1½ 504 (600-1½)	580-2 564 (600-2)

