

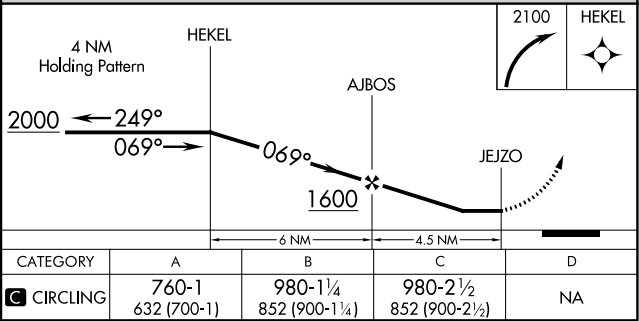
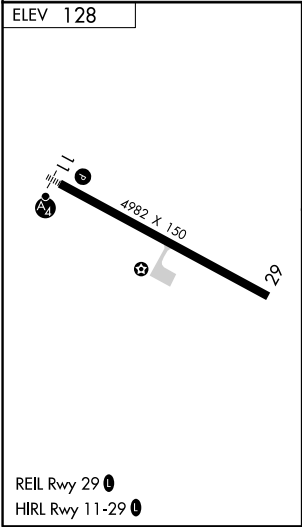
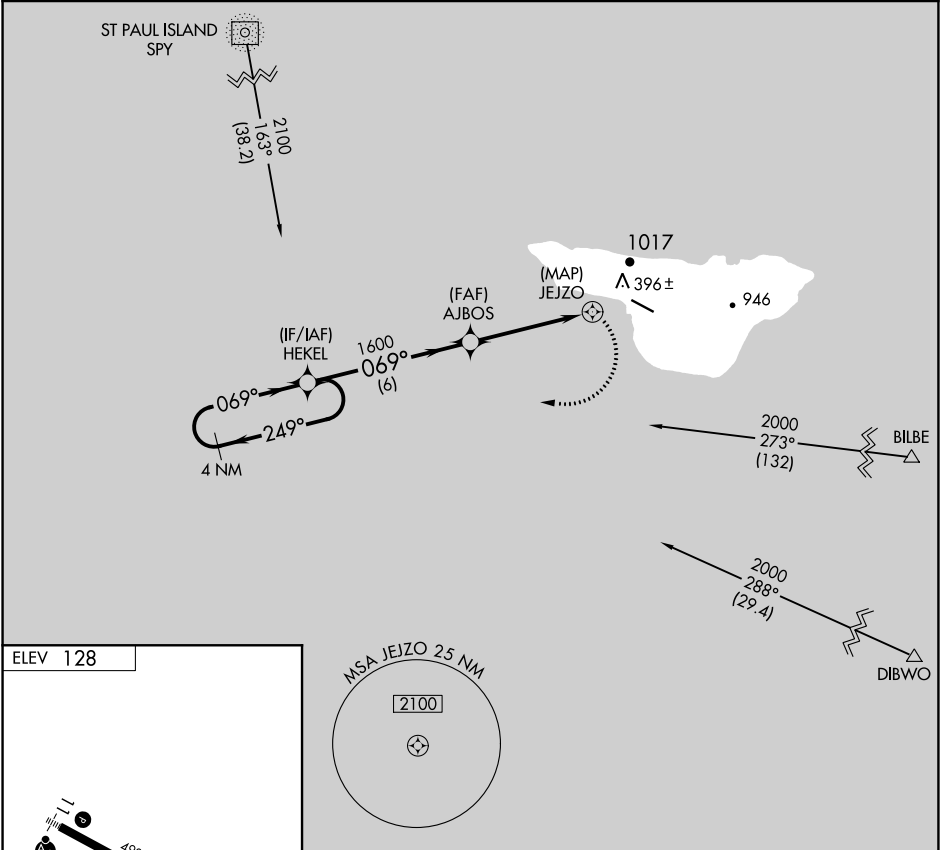
APP CRS	Rwy Idg	N/A
069°	TDZE	N/A
	Apt Elev	128

RNAV (GPS)-D

ST GEORGE (PBV) (PAPB)

<div><div><div></div><div></div></div></div> <div>DME/DME RNP-0.3 NA. Circling NA north of Rwy 11-29.</div>	MISSED APPROACH: Climbing right turn to 2100 direct HEKEL and hold.
---	---

ASOS 135.45	ANCHORAGE CENTER 119.1 339.8	CTAF 122.8 0
----------------	---------------------------------	-----------------



AK, 31 DEC 2020 to 25 FEB 2021

AK, 31 DEC 2020 to 25 FEB 2021