

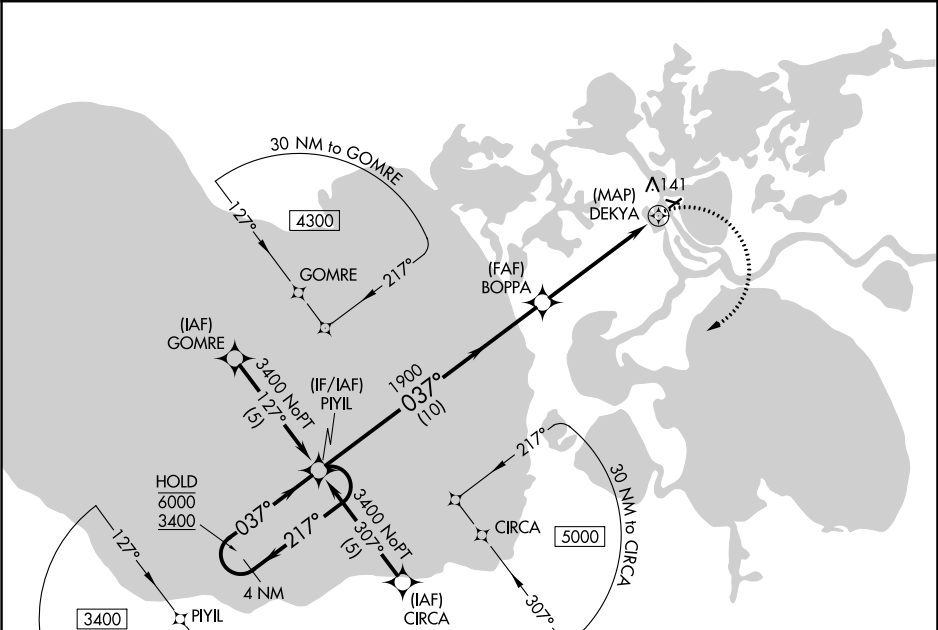
APP CRS	Rwy Idg	3002
037°	TDZE	17
	Apt Elev	17

RNAV (GPS) RWY 4

SELAWIK (WLK) (PASK)

RNP APCH.	<div><div>▼</div><div>Circling Rwy 9, 27 NA at night.</div></div> <div><div>❄</div><div>Rwy 4 helicopter visibility reduction below ¾ SM NA.</div></div>	MISSED APPROACH: Climbing right turn to 3400 direct PIYIL and hold.
-----------	--	---

AWOS-3P 135.65	ANCHORAGE CENTER 119.2 263.0	KOTzebue RADIO 122.5	CTAF 122.7 0
-------------------	---------------------------------	-------------------------	-----------------



ELEV 17	TDZE 17
---------	---------

4 NM Holding Pattern		VGSI and descent angles not coincident (VGSI Angle 3.00/TCH 25).		3400	PIYIL
CATEGORY		A	B	C	D
LNAV MDA		420-1	403 (500-1)	420-1¼	403 (500-1¼)
CIRCLING		480-1	463 (500-1)	480-1½ 463 (500-1½)	580-2 563 (600-2)

MRL Rwy 9-27 and 4-22 0