



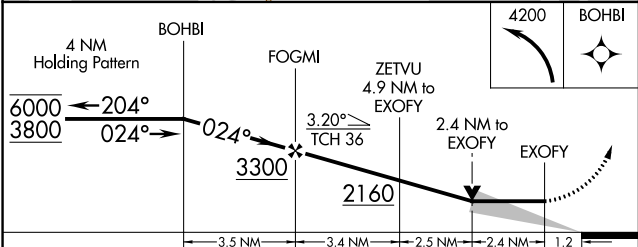
APP CRS	Rwy Idg	5000
024°	TDZE	57
	Apt Elev	80

RNAV (GPS) Y RWY 2

Klawock (AKW) (PAKW)

RNP APCH.		MISSED APPROACH: (Do not exceed 165K until BOHBI) Climbing left turn to 4200 direct BOHBI and hold, continue climb-in-hold to 4200.
		
 -10°C	Circling to Rwy 20 NA at night. Circling NA east of Rwy 2-20.	

ASOS 135.45	ANCHORAGE CENTER 118.5 284.6	KETCHIKAN RADIO 122.25 0	CTAF 120.9
----------------	---------------------------------	-----------------------------	---------------



ELEV 80	TDZE 57
REIL Rwy 2 and 20 MIRL Rwy 2-20 0	

CATEGORY	A	B	C	D
LNAV MDA	1220-1½	1163 (1200-1½)	1220-3 1163 (1200-3)	NA
CIRCLING	1220-1½	1140 (1200-1½)	1300-3 1220 (1300-3)	NA

AK, 31 DEC 2020 to 25 FEB 2021

AK, 31 DEC 2020 to 25 FEB 2021