

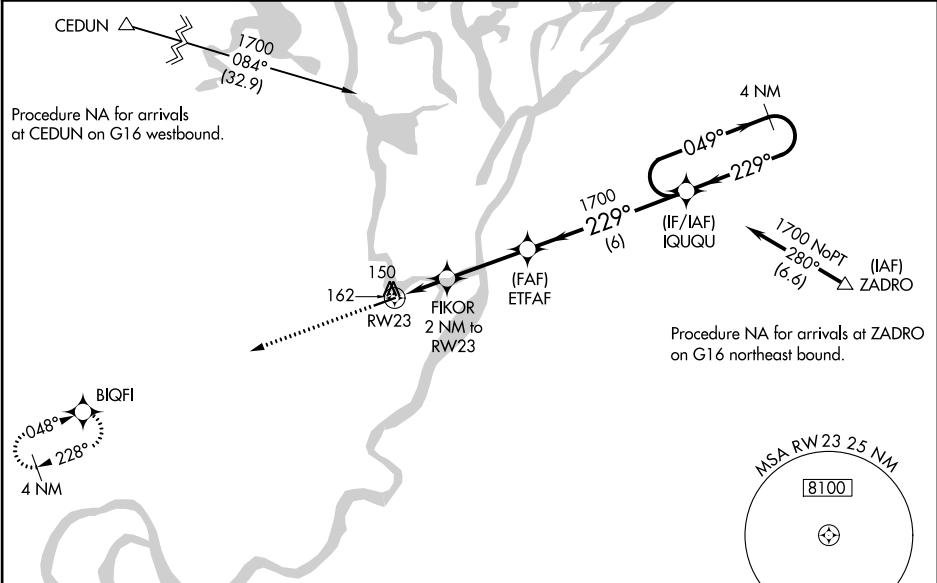
WAAS CH <b>99425</b> <b>W23A</b>	APP CRS <b>229°</b>	Rwy Idg <b>4589</b> TDZE <b>45</b> Apt Elev <b>45</b>
--	------------------------	---

RNAV (GPS) RWY 23  
NUIQSUT (AQT) (PAQT)

**⚠** For uncompensated Baro-VNAV systems, LNAV/VNAV NA below -25°C (-13°F) or above 54°C (130°F). DME/DME RNP-0.3 NA. Baro-VNAV NA with Deadhorse altimeter setting. When local altimeter setting not received, use Deadhorse altimeter setting and increase all DA 123 feet and all MDA 140 feet, increase LPV all Cats and LNAV Circling Cat C visibility ¼ mile, increase LNAV/VNAV all Cats and LNAV Cat C visibility ½ mile.

**MISSED APPROACH:**  
Climb to 1700 direct  
BIQFI and hold.

ASOS <b>135.35</b>	ANCHORAGE CENTER <b>119.4</b>	DEADHORSE RADIO <b>122.5</b>	CTAF <b>122.8</b>
-----------------------	----------------------------------	---------------------------------	----------------------



ELEV **45**      TDZE **45**

HIRL Rwy 5-23 **⓪**  
REIL Rwy 23 **⓪**

4589 X 100  
229° to RW23

**1700**      **BIQFI**      VGSi and RNAV glidepath not coincident (VGSi Angle 3.00°/TCH 33).

**ETFAF**      **IQUQU**      **4 NM Holding Pattern**

**\* LNAV only**      **FIKOR 2 NM to RW23**      **1700**      **229°**      **049°**      **1700**

**720\***      **2 NM**      **3.1 NM**      **6 NM**      **GP 3.00° TCH 52**

CATEGORY	A	B	C	D
LPV    DA	295-1	250 (300-1)		NA
LNAV/VNAV    DA	369-1	324 (400-1)		NA
LNAV MDA	480-1	435 (500-1)	480-1½ 435 (500-1½)	NA
CIRCLING	520-1	475 (500-1)	520-1½ 475 (500-1½)	NA

AK, 31 DEC 2020 to 25 FEB 2021

AK, 31 DEC 2020 to 25 FEB 2021