

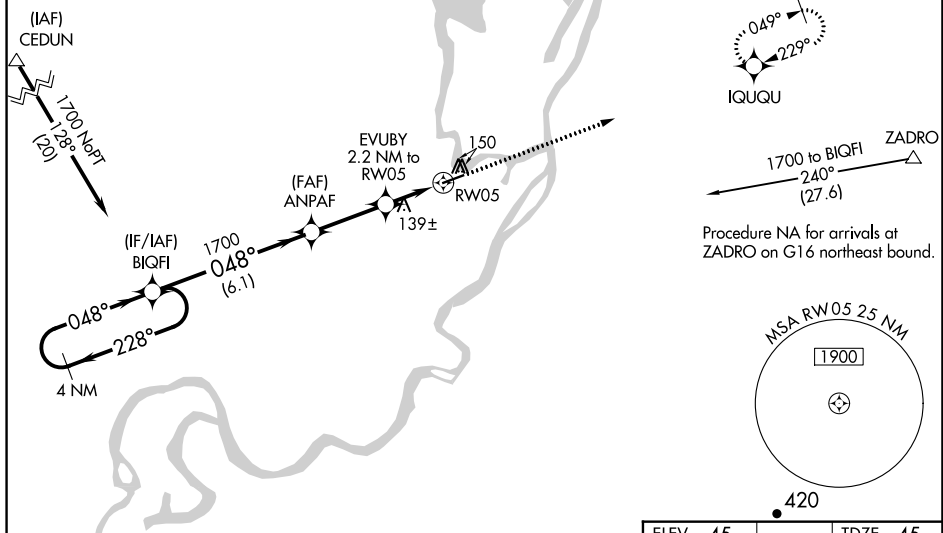
WAAS CH <b>90225</b> <b>W05A</b>	APP CRS <b>048°</b>	Rwy Idg <b>4589</b> TDZE <b>45</b> Apt Elev <b>45</b>
--	------------------------	---

# RNAV (GPS) RWY 5

## NUIQSUT (AQT) (PAQT)

<div><div><div><div><div></div><div></div><div></div><div></div></div><div><div></div><div></div><div></div><div></div></div><div><div></div><div></div><div></div><div></div></div></div><div>-41°C</div></div><div>Inoperative table does not apply. For uncompensated Baro-VNAV systems, LNAV/VNAV NA below -25°C (-13°F) or above 54°C (130°F). DME/DME RNP-0.3 NA. When local altimeter setting not received, use Deadhorse altimeter setting and increase all DA 123 feet and all MDA 140 feet, increase LPV all Cats, LNAV/VNAV all Cats, and Circling Cat C visibility ¼ mile, increase LNAV Cat C visibility ½ mile. VDP and Baro-VNAV NA with Deadhorse altimeter setting.</div></div>		<div>MALSF</div> <div><div><div></div><div></div><div></div><div></div></div><div><div></div><div></div><div></div><div></div></div></div>		<div>MISSED APPROACH: Climb to 1700 direct IQUQU and hold.</div>	
<div>ASOS</div> <div>135.35</div>		<div>ANCHORAGE CENTER</div> <div>119.4</div>		<div>DEADHORSE RADIO</div> <div>122.5</div>	
				<div>CTAF</div> <div>122.8</div>	

### Procedure NA for arrivals at CFDUN on G16 westbound



The diagram illustrates a navigation scenario where the VGSB and RNAV glidepaths are not coincident. Key elements include:

- VGSB and RNAV glidepath not coincident (VGSB Angle 3.00°/TCH 33°).**
- Holding Pattern:** A 4 NM holding pattern at 1700 feet.
- BIQFI** and **ANPAF** are marked along the horizontal axis.
- EVUBY** is located 2.2 NM from RW05.
- \*780** indicates a specific point or distance.
- \*1.1 NM to RW05** is shown twice, indicating distances from the end of the approach segments to the runway threshold.
- RW05** is the runway threshold.
- GP 3.00° TCH 53** is noted for the initial segment.
- \*LNAV only** is indicated for the final segment.

CATEGORY	A	B	C	D
LPV DA	295-1 250 (300-1)			NA
LNAV/VNAV DA	295-1 250 (300-1)			NA
LNAV MDA	440-1 395 (400-1)		440-1½ 395 (400-1½)	NA
CIRCLING	520-1 475 (500-1)		520-1½ 475 (500-1½)	NA

AK, 31 DEC 2020 to 25 FEB 2021

AK, 31 DEC 2020 to 25 FEB 2021