

WAAS CH <b>53543</b> <b>W25A</b>	APP CRS <b>248°</b>	Rwy Idg <b>4370</b> TDZE <b>101</b> Apt Elev <b>101</b>
--	------------------------	---

## RNAV (GPS) RWY 25

ATQASUK EDWARD BURNELL SR MEMORIAL (ATK)(PATQ)

RNP APCH.



For uncompensated Baro-VNAV systems,  
LNAV/VNAV NA below -22°C or above 54°C.

**MISSED APPROACH:** Climb to 3500 direct DUVFU and hold, continue climb-in-hold to 3500.

 -43°C

AWOS-3P

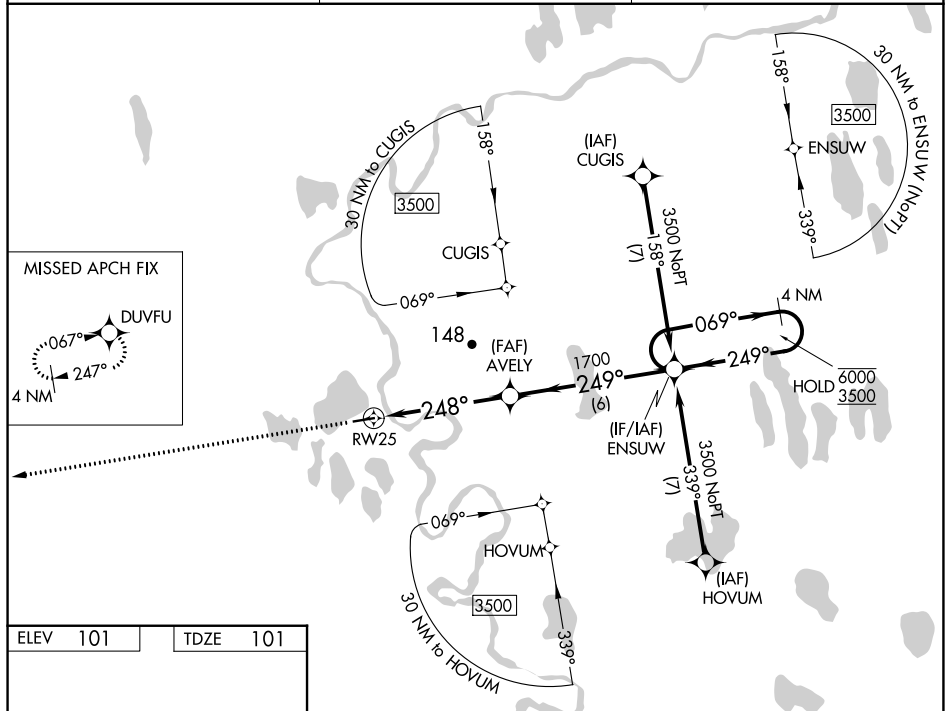
119.925

ANCHORAGE CENTER

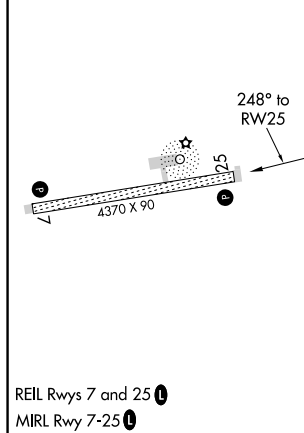
**135.3    239.25**

CTAF

122.9 L



ELEV	101		TDZE	101
------	-----	--	------	-----



3500 ↑	DUVFU ✦	*LNAV only.				4 NM Holding Pattern
CATEGORY	A	B	C	D		
LPV DA	351-1 250 (300-1)					
LNAV/VNAV DA	351-1 250 (300-1)					
LNAV MDA	560-1	459 (500-1)	560-1 <sup>3</sup> / <sub>8</sub>	459 (500-1 <sup>3</sup> / <sub>8</sub> )		
<b>C</b> CIRCLING	560-1	459 (500-1)	560-1 <sup>1</sup> / <sub>2</sub> 459 (500-1 <sup>1</sup> / <sub>2</sub> )	700-2 599 (600-2)		

REIL Rwys 7 and 25 **L**MIRL Rwy 7-25 **L**

ATQASUK, ALASKA

Amdt 2 31 DEC 20

ATQASUK EDWARD BURNELL SR MEMORIAL (ATK)(PATQ)

70°28'N-157°26'W

## RNAV (GPS) RWY 25