

WAAS CH 61108 W21A	APP CRS 212°	Rwy Idg TDZE 217 Apt Elev 220
----------------------------------------	------------------------	---------------------------------------------------

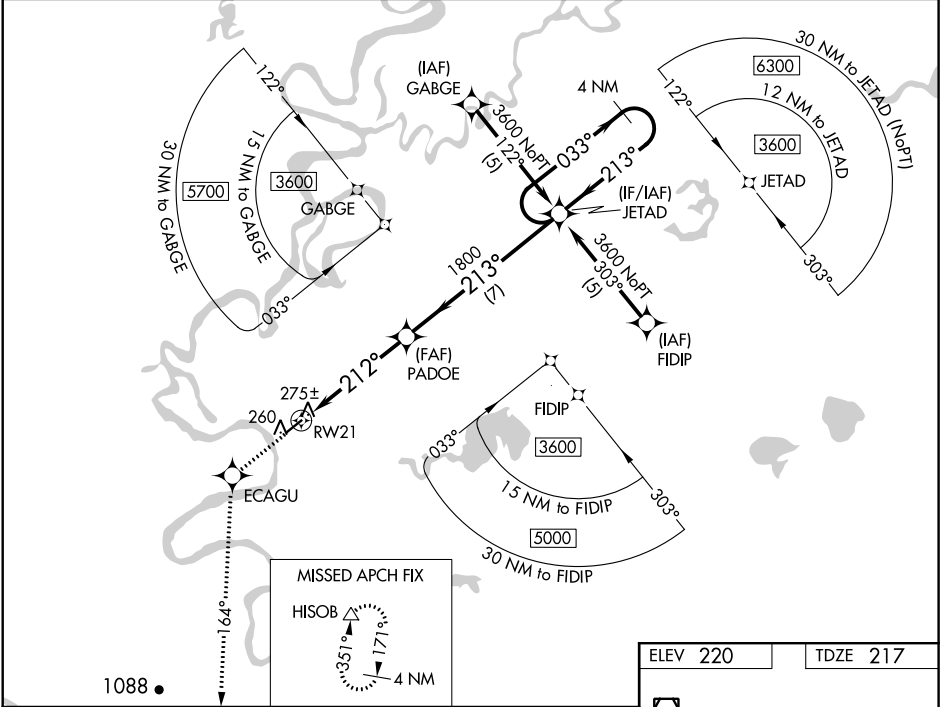
RNAV (GPS) RWY 21

HUSUA (HLA)(PAHL)

For uncompensated Baro-VNAV systems, LNAV/VNAV NA below -25°C (-13°F) or above 48°C (118°F). Helicopter visibility reduction below ¾ SM NA. DME/DME RNP-0.3 NA.

MISSED APPROACH: Climb to 3000 direct ECAGU and via 164° track to HISOB and hold.

AWOS-3P 135.75	ANCHORAGE CENTER 127.0 290.2	FAIRBANKS RADIO 122.4	UNICOM 122.8 (CTAF) 0
--------------------------	----------------------------------------	---------------------------------	---------------------------------



3000	ECAGU	HISOB	VGSI and RNAV glidepath not coincident (VGSI Angle 3.00/TCH 25).			
↑	✧	△	tr 164°	JETAD	4 NM Holding Pattern	
RW21		PADOE	212°	213°	033°	3600
			1800			GP 3.00° TCH 45
			4.8 NM	7 NM		
CATEGORY	A	B	C	D		
LPV DA	517-1		300 (300-1)			
LNAV/VNAV DA	549-1¼		332 (400-1¼)			
LNAV MDA	540-1		323 (400-1)			
CIRCLING	600-1 380 (400-1)	680-1 460 (500-1)	680-1½ 460 (500-1½)	780-2 560 (600-2)		

