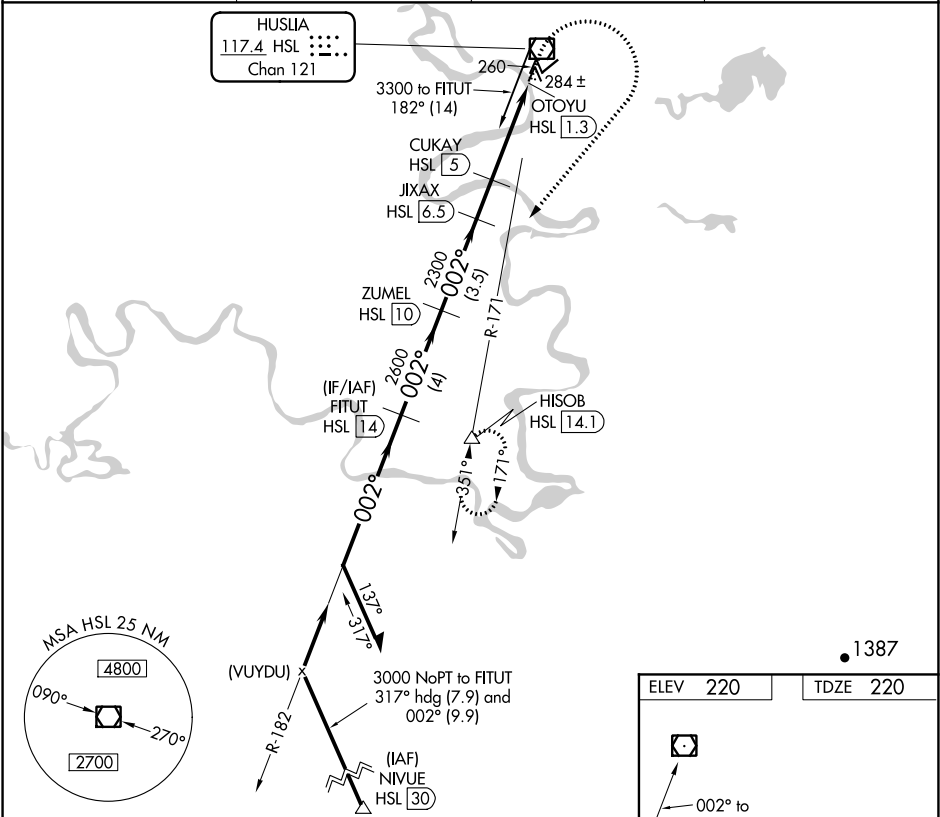


VOR/DME HSL	APP CRS	Rwy Idg	4000
117.4	002°	TDZE	220
Chan 121		Apt Elev	220

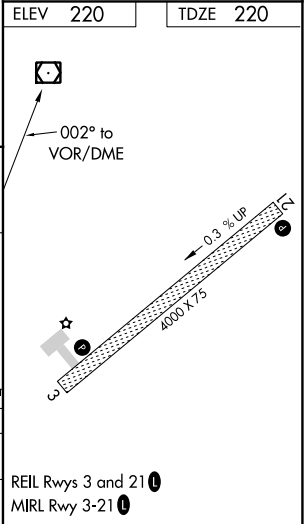
VOR/DME RWY 3
HUSLIA (HLA) (PAHL)

Helicopter visibility reduction below ¾ SM NA.	MISSED APPROACH: Climb to 700 then climbing right turn to 3000 on heading 201° and HSL R-171 to HISOB/14.1 DME and hold.
--	--

AWOS-3P 135.75	ANCHORAGE CENTER 127.0 290.2	FAIRBANKS RADIO 122.4	UNICOM 122.8 (CTAF) 0
-------------------	---------------------------------	--------------------------	--------------------------



Remain within 10 NM	FITUT HSL 14	700	3000	HSL R-171	HISOB
3000	002°	3000	hdg 201°		
VGSI and descent angles not coincident (VGSI Angle 3.00/TCH 25).	2600	2300	1760	OTOYU HSL 1.3	
	4 NM	3.5 NM	1.5 NM	3.7 NM	0.6 NM
CATEGORY	A	B	C	D	
S-3	540-1	320 (400-1)			
CIRCLING	600-1 380 (400-1)	680-1 460 (500-1)	680-1½ 460 (500-1½)	780-2 560 (600-2)	



AK, 31 DEC 2020 to 25 FEB 2021

AK, 31 DEC 2020 to 25 FEB 2021