

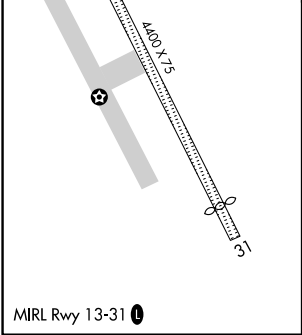
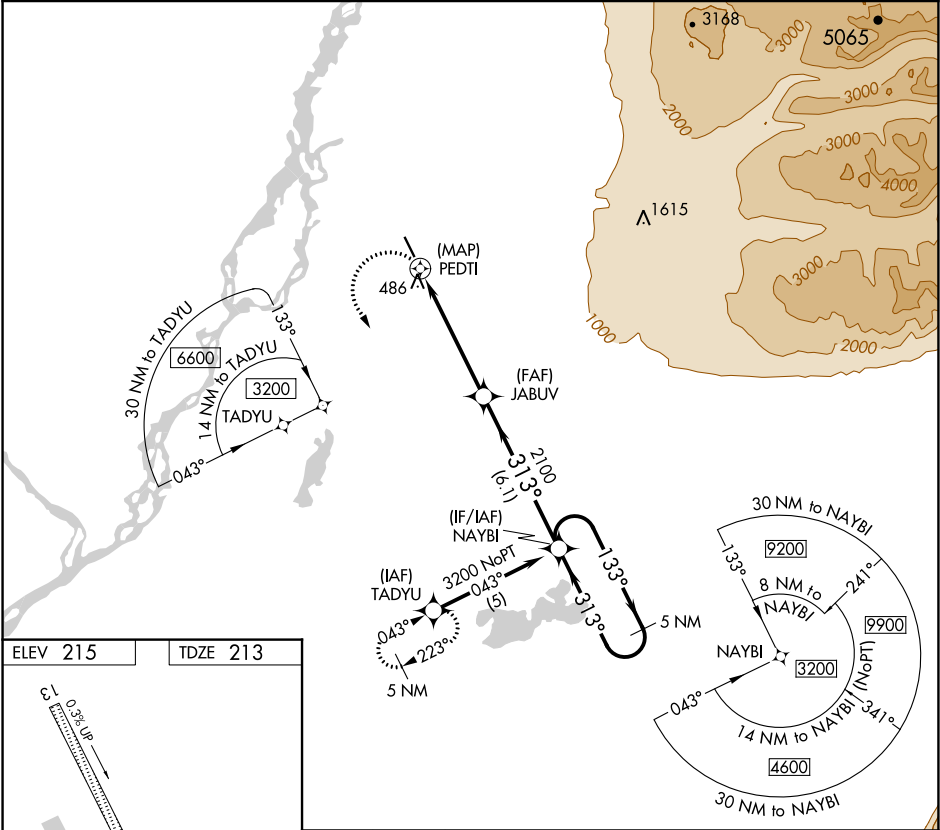
APP CRS	Rwy Idg	4000
313°	TDZE	213
	Apt Elev	215

RNAV (GPS) RWY 31

WILLOW (UUO)(PAUO)

<div><div>▼</div><div>▲ NA</div></div>	Use Wasilla altimeter setting. Procedure NA at night. DME/DME RNP-0.3 NA.	MISSED APPROACH: Climbing left turn to 3200 direct TADYU and hold.
--	---	--

IYS/PAWS AWOS-3P 135.25	ANCHORAGE CENTER 133.7 279.6	CTAF 122.8 0
----------------------------	---------------------------------	-----------------



3200	TADYU	JABUV	NAYBI	5 NM Holding Pattern
		PEDTI		133° → 3200
		3.05° TCH 50		← 313°
		2100		
		0.6	5.1 NM	6.1 NM
CATEGORY	A	B	C	D
LNAV MDA	1220-1¼ 1007 (1100-1¼)	1220-1½ 1007 (1100-1½)	1220-3 1007 (1100-3)	NA
CIRCLING	1220-1¼ 1005 (1100-1¼)	1220-1½ 1005 (1100-1½)	1220-3 1005 (1100-3)	NA