

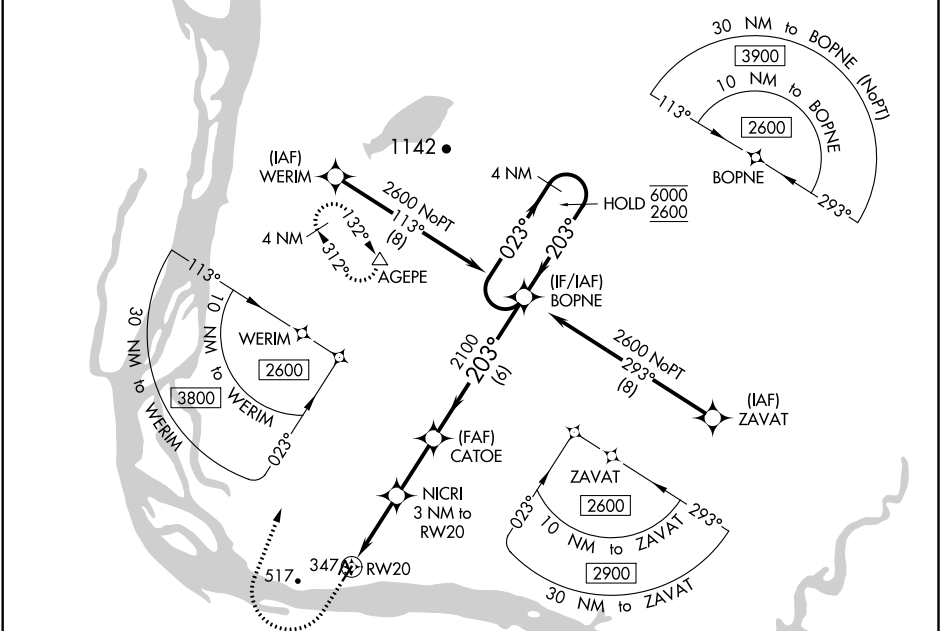
WAAS CH 60944 W20A	APP CRS 203°	Rwy Idg TDZE Apt Elev	3501 339 339
--	------------------------	-----------------------------	---

RNAV (GPS) RWY 20

MOUNTAIN VILLAGE (MOU) (PAMO)

RNP APCH. ▼ For uncompensated Baro-VNAV systems, LNAV/VNAV NA below -22°C or above 54°C.	MISSED APPROACH: Climb to 740 then climbing right turn to 3000 direct AGEPE and hold, continue climb-in-hold to 3000.
---	---

AWOS-3P 118.35	ANCHORAGE CENTER 124.0	CTAF 122.90
--------------------------	----------------------------------	-----------------------



740 ↑		3000 ↷		AGEPE △		VGSI and RNAV glidepath not coincident (VGSI Angle 3.00/TCH 25).		BOPNE		4 NM Holding Pattern	
*LNAV only		*0.7 NM to RW20		NICRI 3 NM to RW20		CATOE 2100		2100		2100	
RW20		0.7		2.3 NM		2.4 NM		6 NM		GP 3.00° TCH 30	
1320*											
CATEGORY		A		B		C		D			
LPV DA		539-1		200 (200-1)							
LNAV/ VNAV DA		589-1		250 (300-1)							
LNAV MDA		600-1		261 (300-1)							
CIRCLING		700-1 361 (400-1)		840-1 501 (600-1)		840-1½ 501 (600-1½)		900-2 561 (600-2)			

ELEV 339

TDZE 339

203° to RW20

203°

203°

6000

2600

3500 X 75

1.2% Up

MIRL Rwy 2-20

REIL Rws 2 and 20