

WAAS CH 93602 W20A	APP CRS 196°	Rwy Idg 4001 TDZE 88 Apt Elev 98	RNAV (GPS) RWY 20 ST MICHAEL (SMK) (PAMK)
--	------------------------	---	---

▼

▲

W

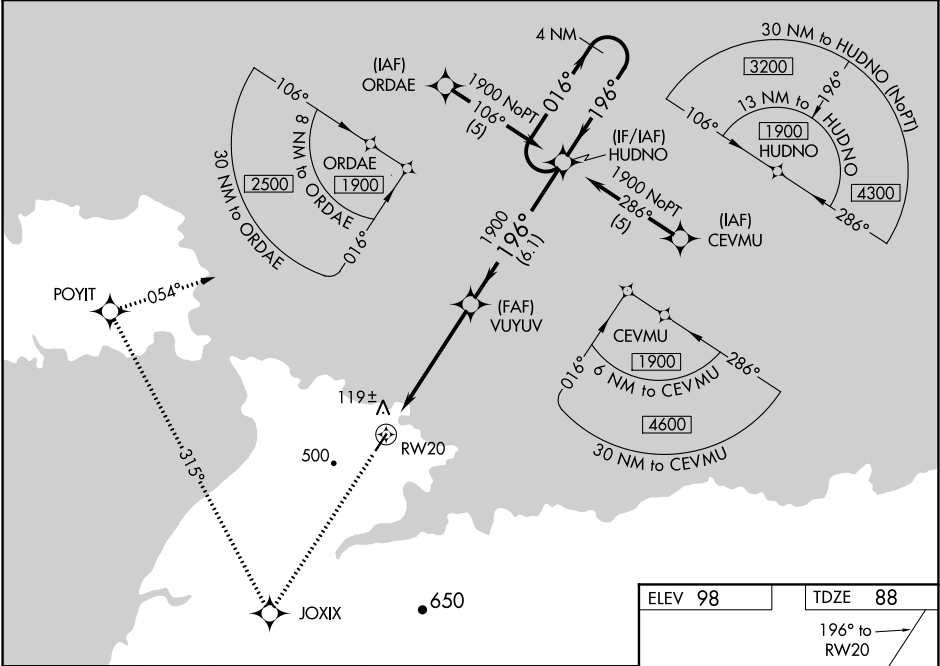
❄

-37°C

If local altimeter setting not received, use Unalakleet altimeter setting and increase all DAs/MDAs 120 feet. Circling NA west of Rwy 2-20.
DME/DME RNP-0.3 NA. Baro-VNAV NA when using Unalakleet altimeter setting. For uncompensated Baro-VNAV systems, LNAV/VNAV NA below -25°C (-13°F) or above 48°C (120°F).
VDP NA with Unalakleet altimeter setting.

MISSED APPROACH: Climb to 1900 direct JOXIX and right turn via 315° track to POYIT and right turn via 054° track to HUDNO and hold.

AWOS-3P 119.275	ANCHORAGE CENTER 124.0	NOME RADIO 122.30	UNICOM 122.8 (CTAF) 0
---------------------------	----------------------------------	-----------------------------	---------------------------------



1900

JOXIX

POYIT

HUDNO

1900

315° tr

054° tr

*LNAV only

VUYUV

HUDNO

4 NM Holding Pattern

RW20

1.3 NM to RW20

1900

196°

016°

1900

GP 3.00° TCH 45

1.3 NM

4.2 NM

6.1 NM

CATEGORY	A	B	C	D
LPV DA		338-1	250 (300-1)	
LNAV/VNAV DA		452-1¼	364 (400-1¼)	
LNAV MDA	520-1	432 (500-1)	520-1¼ 432 (500-1¼)	520-1½ 432 (500-1½)
CIRCLING	520-1 422 (500-1)	560-1 462 (500-1)	560-1½ 462 (500-1½)	660-2 562 (600-2)

ELEV 98

TDZE 88

196° to RW20

0.8% Up

400 X 75

2

MIRL Rwy 2-20 0