

| | | |
|---------|----------|------|
| APP CRS | Rwy Idg | 3300 |
| 093° | TDZE | 272 |
| | Apt Elev | 274 |

RNAV (GPS) RWY 9

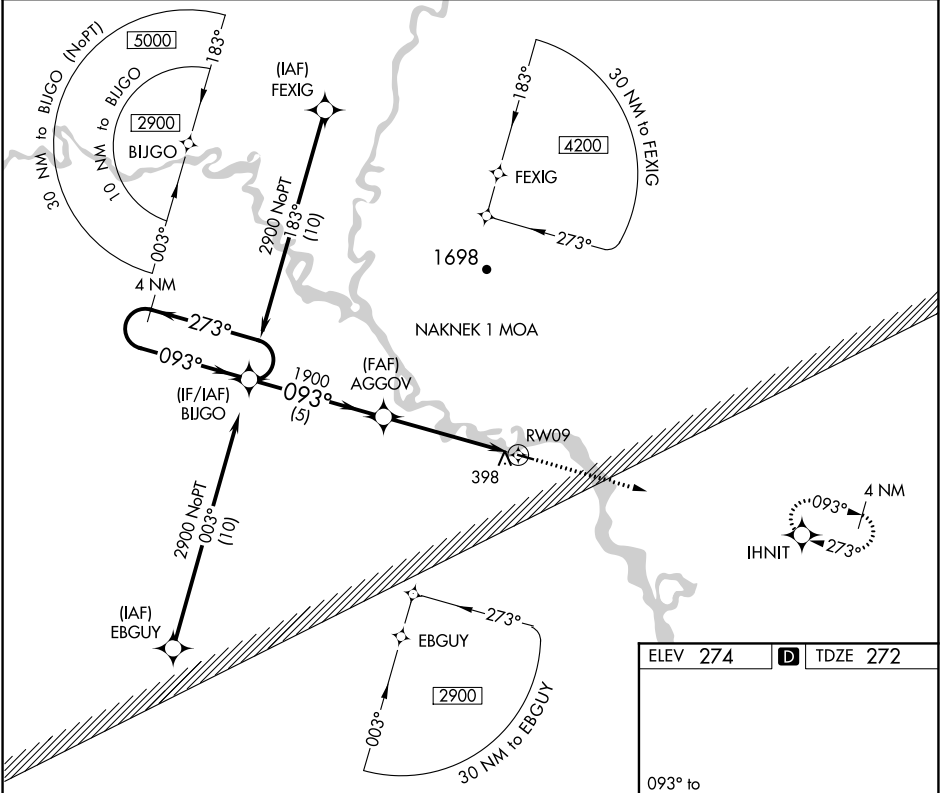
KOLIGANEK (JZZ) (PAJZ)

⚠

When local altimeter setting not received, use new Stuyahok altimeter setting and increase all MDA 60 feet. DME/DME RNP-0.3 NA. Helicopter visibility reduction below 1 SM NA. Procedure NA at night.

MISSED APPROACH: Climb to 3400 direct IHNIT and hold, continue climb-in-hold to 3400.

| | | | |
|--------------------|-----------------------------------|----------------------------|---------------|
| AWOS-3P 118.525 | ANCHORAGE CENTER 132.75 282.35 | DILLINGHAM RADIO 122.55 | CTAF 122.9 |
|--------------------|-----------------------------------|----------------------------|---------------|



4 NM Holding Pattern

BIJGO

AGGOV

3400

IHNIT

2900

273°

093°

093°

1900

3.06°

TCH 40

RW09

5 NM

5 NM

| | | | | |
|----------|----------------------|----------------------|----|----|
| CATEGORY | A | B | C | D |
| LNAV MDA | 720-1 | 448 (500-1) | NA | NA |
| CIRCLING | 720-1 446 (500-1) | 740-1 466 (500-1) | NA | NA |

ELEV 274

TDZE 272

093° to RW09

1.0% Up

3300 X 75

MIRL Rwy 9-27

AK, 31 DEC 2020 to 25 FEB 2021

AK, 31 DEC 2020 to 25 FEB 2021