

WAAS  
CH **87033**  
**W17A**

APP CRS  
**173°**

Rwy Idg  
TDZE  
Apt Elev  
**3200**  
**20**  
**20**

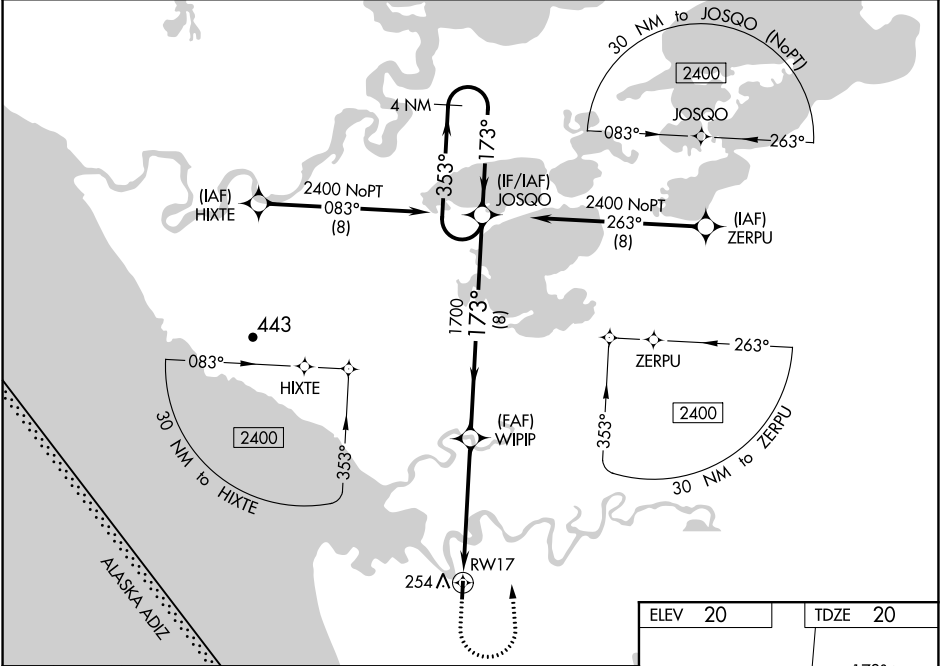
**RNAV (GPS) RWY 17**

KIPNUK (IIK) (PAKI)

**⚠** Baro-VNAV NA when using Toksook Bay altimeter setting. For uncompensated Baro-VNAV systems, LNAV/VNAV NA below -20°C (-4°F) or above 54°C (130°F). DME/DME RNP-0.3 NA. Procedure NA at night. VDP NA when using Toksook Bay altimeter setting. When local altimeter setting not received use Toksook Bay altimeter setting: increase LPV DA to 389 feet and visibility all Cats ¼ SM. Increase LNAV/VNAV DA to 553 feet and visibility all Cats ½ SM. Increase all MDA 120 feet. Increase LNAV Cat C and D visibility to 1¾ SM, Circling Cat C to 2 SM, Cat D to 2¼ SM.

**MISSED APPROACH:**  
Climb to 500 then climbing left turn to 2400 direct JOSQO and hold.

AWOS-3P <b>118.325</b>	ANCHORAGE CENTER <b>125.2 372.0</b>	CTAF <b>122.7 0</b>
---------------------------	--	------------------------



500

2400

JOSQO

\*LNAV only

\*1.4 NM to RWY17

RWY17

WIPIIP

JOSQO

4 NM Holding Pattern

353° → 2400

← 173°

1700

GP 3.00°

TCH 40

1.4

3.8 NM

8 NM

CATEGORY	A	B	C	D
LPV DA	270-1 250 (300-1)			
LNAV/VNAV DA	434-1⅜ 414 (500-1⅜)			
LNAV MDA	520-1	500 (500-1)	520-1⅜	500 (500-1⅜)
<b>C</b> CIRCLING	580-1	560 (600-1)	580-1½ 560 (600-1½)	580-2 560 (600-2)

ELEV 20

TDZE 20

173° to RWY17

41

3200 X 40

35

MIRL Rwy 17-35 **0**