

WAAS CH 93833 W35A	APP CRS 353°	Rwy Idg 3200 TDZE 20 Apt Elev 20
--	------------------------	---

RNAV (GPS) RWY 35

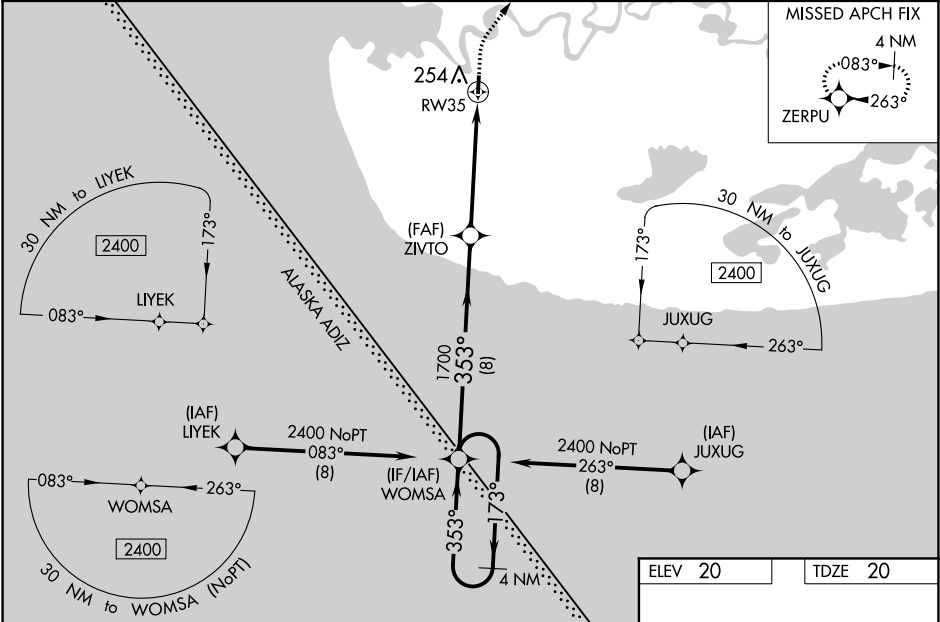
KIPNUK (IIK) (PAKI)

⚠

Baro-VNAV NA when using Toksook Bay altimeter setting. For uncompensated Baro-VNAV systems, LNAV/VNAV NA below -20°C (-4°F) or above 54°C (130°F). Helicopter visibility reduction below ¾ SM NA. DME/DME RNP-0.3 NA. Procedure NA at night. VDP NA when using Toksook Bay altimeter setting. When local altimeter setting is not received use Toksook Bay altimeter setting: increase LPV DA to 389 feet and visibility all Cats ¼ SM. Increase LNAV/VNAV DA to 465 and visibility all Cats ¾ SM. Increase all MDA 120 feet. Increase LNAV Cat C and D visibility to 1 ¼ SM, Circling Cat C to 2 SM, Cat D to 2 ¼ SM.

MISSED APPROACH: Climb to 500 then climbing right turn to 2400 direct ZERPU and hold.

AWOS-3P 118.325	ANCHORAGE CENTER 125.2 372.0	CTAF 122.7 0
---------------------------	--	------------------------



4 NM Holding Pattern		WOMSA		ZIVTO		RW35		ZERPU	
2400		173°		353°		1700		*1.4 NM to RW35	
GP 3.00°		TCH 40		8 NM		3.8 NM		1.4 NM	
CATEGORY		A		B		C		D	
LPV DA		270-1		250 (300-1)					
LNAV/VNAV DA		346-1 1/8		326 (400-1 1/8)					
LNAV MDA		520-1		500 (500-1)		520-1 3/8		500 (500-1 3/8)	
CIRCLING		580-1		560 (600-1)		580-1 1/2		580-2	
						560 (600-1 1/2)		560 (600-2)	

ELEV 20

TDZE 20

500

2400

ZERPU

41

3200 X 60

35

353° to RW35

MIRL Rwy 17-35 0