

APP CRS
013°

Rwy Idg
TDZE
74

Apt Elev
75

RNAV (GPS) RWY 1

HOLY CROSS (HCA) (PAHC)

RNP APCH.

▼

▲

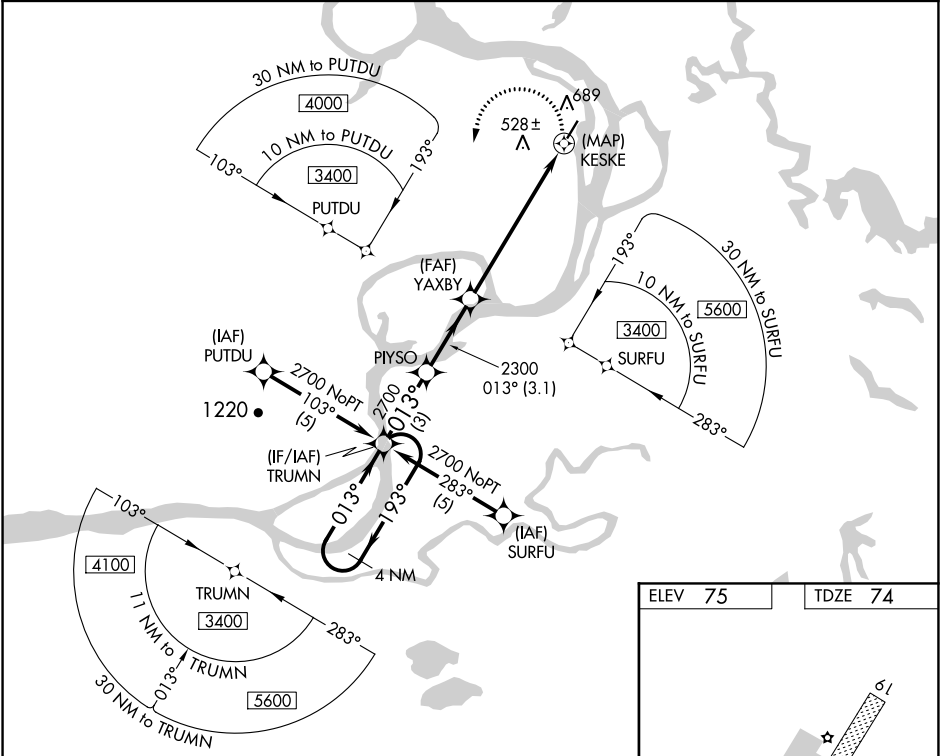
❄

-29°C

Circling NA west of Rwy 1-19. When local altimeter setting not received, use Anvik altimeter setting and increase all MDAs 120 feet, and increase visibility LNAV Cat A, B, D ¼ SM, Cat C ½ SM and Circling Cat B, D ¼ SM, Cat C ½ SM. Circling Rwy 19 NA at night. Rwy 1 helicopter visibility reduction below ¾ SM NA.

MISSED APPROACH: Climbing left turn to 2700 direct TRUMN and hold.

AWOS-3P 118.325	ANCHORAGE CENTER 118.15 251.05	KENAI RADIO 122.45	CTAF 122.8 0
---------------------------	--	------------------------------	------------------------



Visual Segment - Obstacles.

4 NM Holding Pattern

TRUMN

PIYSO

YAXBY

KESKE

2700

193°

013°

2700

013°

2300

3 NM

3.1 NM

6.5 NM

0.3

CATEGORY	A	B	C	D
LNAV MDA	940-1 866 (900-1)	940-1½ 866 (900-1½)	940-2½ 866 (900-2½)	940-2¾ 866 (900-2¾)
CIRCLING	940-1½ 865 (900-1½)	940-1½ 865 (900-1½)	940-2½ 865 (900-2½)	940-2¾ 865 (900-2¾)

013° to KESKE

MIRL Rwy 1-19 0