

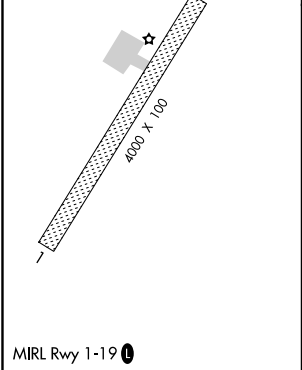
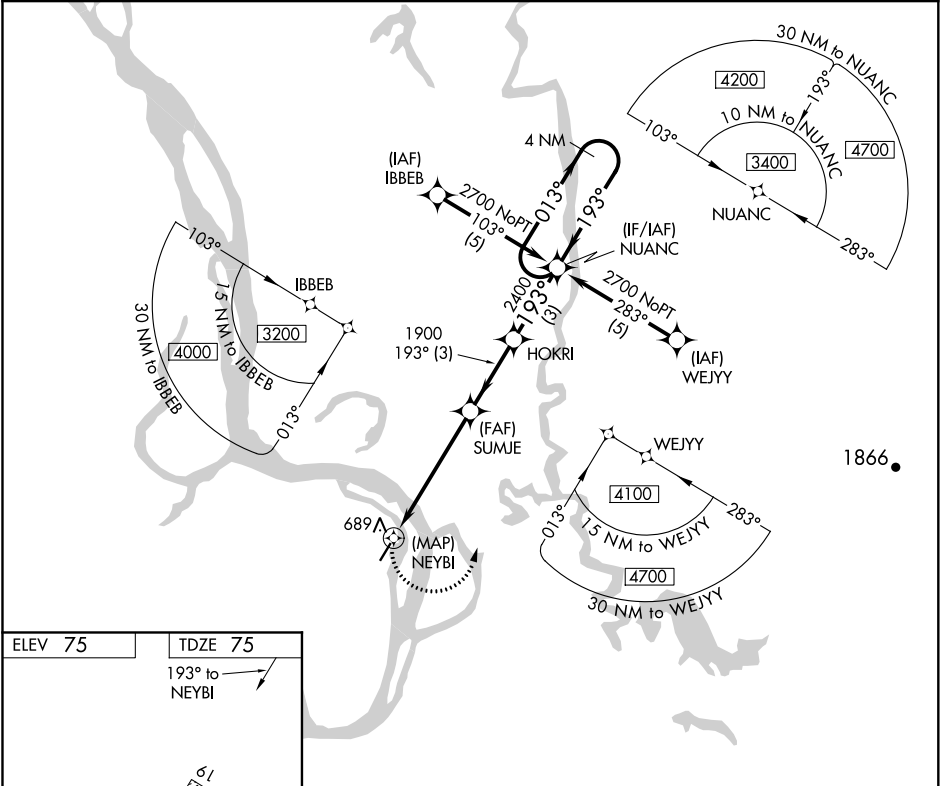
APP CRS	Rwy Idg	4000
193°	TDZE	75
	Apt Elev	75

RNAV (GPS) RWY 19
HOLY CROSS (HCA) (PAHC)

⚠ Rwy 1, 19 helicopter visibility reduction below 1 SM NA. DME/DME RNP-0.3 NA. Procedure NA at night. Circling NA west of Rwy 1-19. When local altimeter setting not received, use Anvik altimeter setting and increase all MDAs 120 feet, and increase visibility Cat B/C ¼ SM and LNAV Cat D ½ SM.

MISSED APPROACH:
Climbing left turn to 2700 direct NUANC and hold.

AWOS-3P 118.325	ANCHORAGE CENTER 118.15 251.05	KENAI RADIO 122.45	CTAF 122.8
--------------------	-----------------------------------	-----------------------	---------------



2700	NUANC	Visual Segment - Obstacles.		NUANC	4 NM Holding Pattern
		SUMJE	HOKRI		
	NEYBI	1900	2400	193°	013°
				193°	2700
0.2		5.3 NM	3 NM	3 NM	
CATEGORY	A	B	C	D	
LNAV MDA	1020-1¼	945 (1000-1¼)	1020-2¾	1020-3	
			945 (1000-2¾)	945 (1000-3)	
CIRCLING	1020-1¼	945 (1000-1¼)	1020-2¾	1020-3	
			945 (1000-2¾)	945 (1000-3)	

AK, 31 DEC 2020 to 25 FEB 2021

AK, 31 DEC 2020 to 25 FEB 2021