

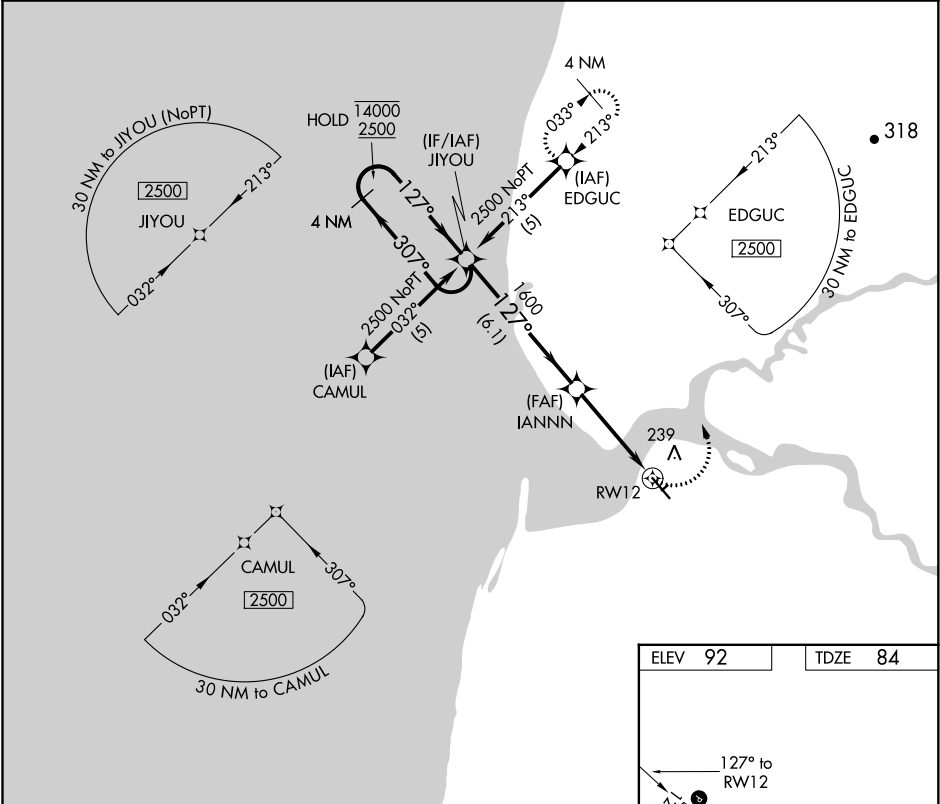
APP CRS	Rwy Idg	5600
127°	TDZE	84
	Apt Elev	92

RNAV (GPS) RWY 12

EGEGIK (EII) (PAII)

RNP APCH.	MISSED APPROACH: Climbing left turn to 2500 direct EDGUC and hold.
▼ Rwy 12 helicopter visibility reduction below 1 SM NA.	

AWOS-3P 135.65	ANCHORAGE CENTER 124.8 354.0	CTAF 122.8 0
-------------------	---------------------------------	-----------------



4 NM Holding Pattern

VGSI and descent angles not coincident (VGSI Angle 3.00/TCH 35).

2500 EDGUC

JIYOU

14000 2500

307° 127°

127°

IANNN

1600

3.34° TCH 35

6.1 NM 4.2 NM

RWY 12

CATEGORY	A	B	C	D
LNAY MDA	600-1	516 (600-1)	600-1¾ 516 (600-1¾)	NA
CIRCLING	800-1	708 (800-1)	800-2¼ 708 (800-2¼)	NA

ELEV 92 TDZE 84

127° to RWY 12

500 X 100

150 X 75

REIL Rwy 12 0

MIRL Rwy 3-21 and 12-30 0

AK, 31 DEC 2020 to 25 FEB 2021

AK, 31 DEC 2020 to 25 FEB 2021