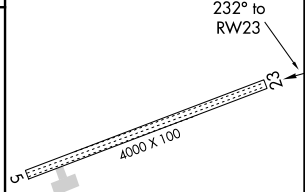
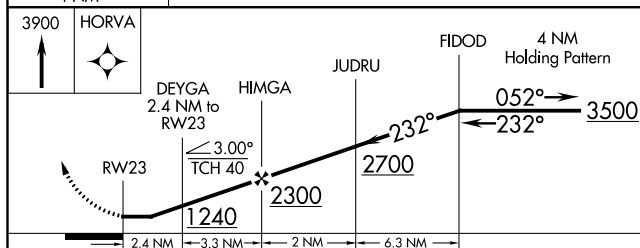
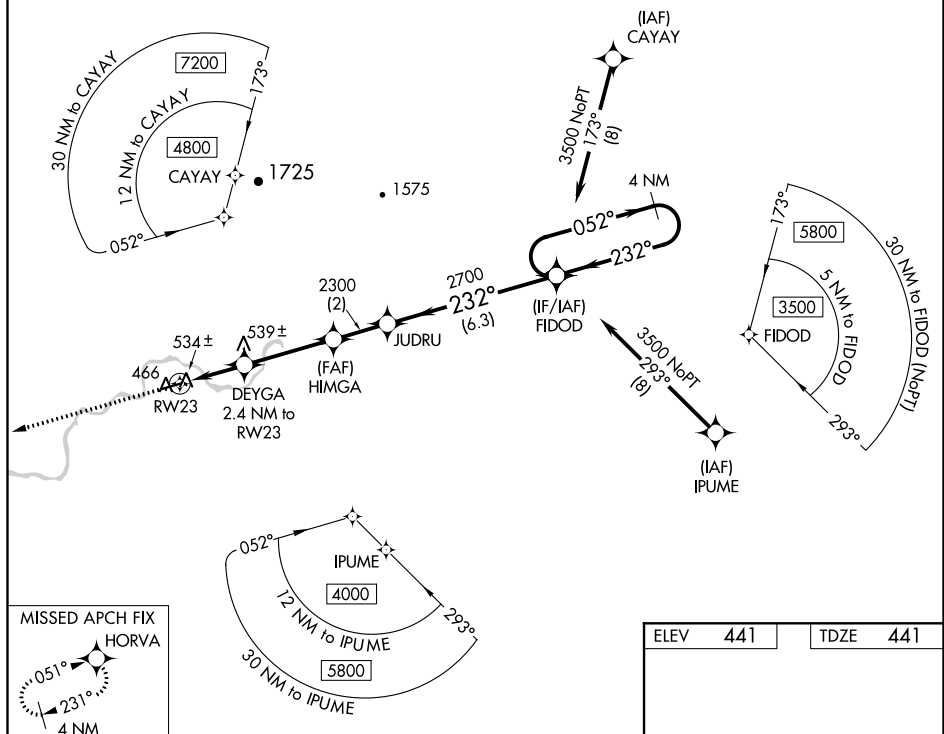


RNAV (GPS) RWY 23
ALLAKAKET (6A8) (PFAL)

MISSED APPROACH: Climb to 3900 direct
HORVA and hold, continue climb-in-hold
to 3900.

BTT/PABT ASOS 135.45	ANCHORAGE CENTER 124.6 352.0	FAIRBANKS RADIO 122.2	CTAF 122.9 0
--------------------------------	--	---------------------------------	------------------------



CATEGORY	A	B	C	D
LP MDA	900-1	459 (500-1)	900-1 $\frac{1}{8}$ 459 (500-1 $\frac{1}{8}$)	NA
LNAV MDA	900-1	459 (500-1)	900-1 $\frac{1}{8}$ 459 (500-1 $\frac{1}{8}$)	NA
CIRCLING	1100-1 659 (700-1)	1160-1 719 (800-1)	1200-2 $\frac{1}{4}$ 759 (800-2 $\frac{1}{4}$)	NA

MIRL Rwy 5-23 **L**

AK, 31 DEC 2020 to 25 FEB 2021