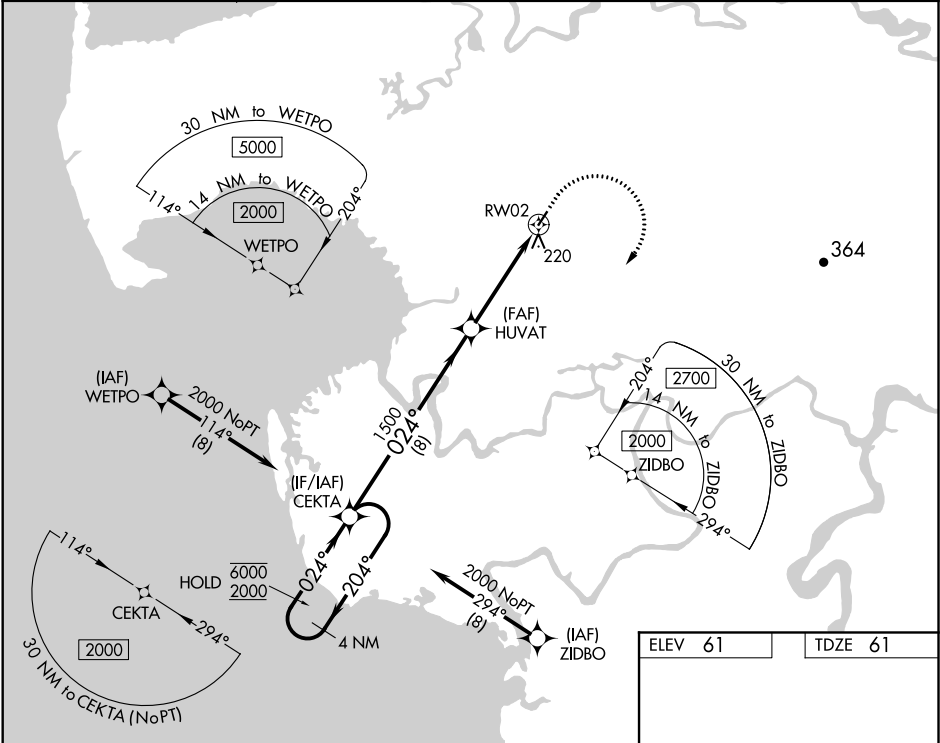


APP CRS	Rwy Idg	3220
024°	TDZE	61
	Apt Elev	61

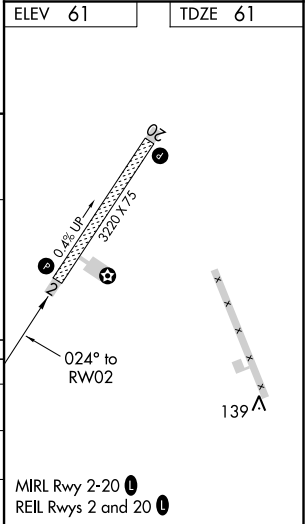
RNAV (GPS) RWY 2
CHEVAK (VAK)(PAVA)

RNP APCH.	MISSED APPROACH: Climb to 500, then climbing right turn to 2000 direct CEKTA and hold.
For uncompensated Baro-VNAV systems, LNAV/VNAV NA below -22°C or above 54°C.	

AWOS-3P 120.625	ANCHORAGE CENTER 124.5	UNICOM 122.8	CTAF 123.0
--------------------	---------------------------	-----------------	---------------



4 NM Holding Pattern				VGSI and RNAV glidepath not coincident (VGSI Angle 3.00/TCH 25).				500	2000	CEKTA
CEKTA				HUVAT				1500	1500	* LNAV only
6000 2000				1500				1500	1500	
GP 3.00° TCH 40				1500				1500	1500	
8 NM				3.1 NM				1.3 NM	1.3 NM	
CATEGORY	A	B	C	D						
LNAV/VNAV DA	381-1				320 (400-1)					
LNAV MDA	480-1	419 (500-1)		480-1½		419 (500-1½)				
CIRCLING	520-1	459 (500-1)		520-1½		459 (500-1½)				
						700-2		639 (700-2)		



AK, 31 DEC 2020 to 25 FEB 2021

AK, 31 DEC 2020 to 25 FEB 2021