

APP CRS

204°

Rwy Idg

TDZE

Apt Elev

3220

61

61

RNAV (GPS) RWY 20

CHEVAK (VAK)(PAVA)

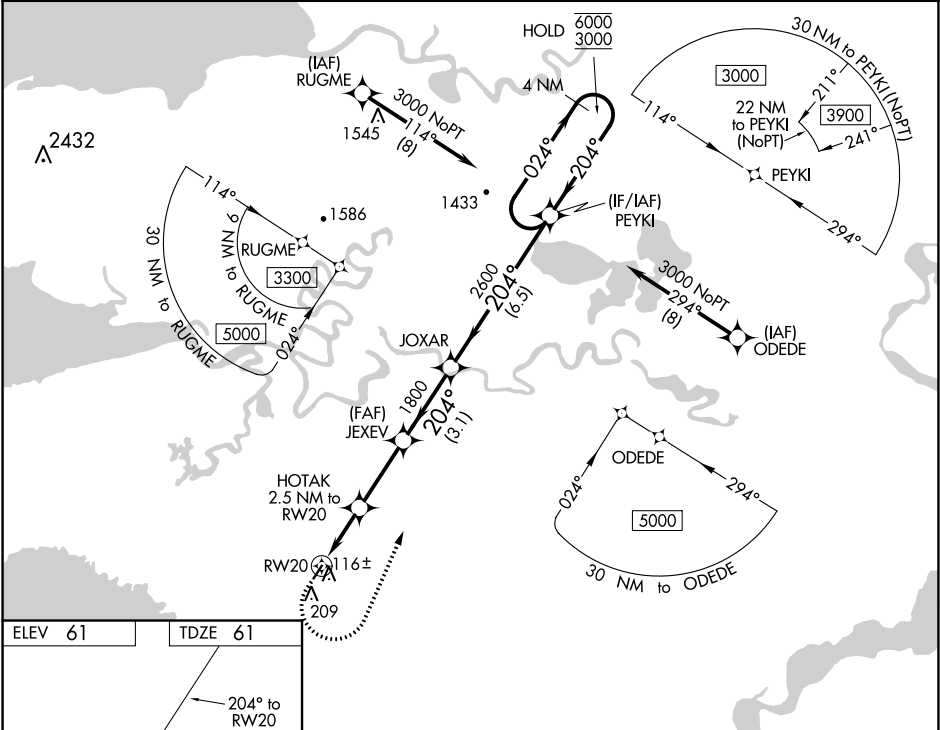
RNP APCH.

▼

For uncompensated Baro-VNAV systems, LNAV/VNAV NA below -20°C or above 54°C.

MISSED APPROACH: Climb to 500. Then climbing left turn to 3000 direct PEYKI and hold.

AWOS-3P 120.625	ANCHORAGE CENTER 124.5	UNICOM 122.8	CTAF 123.0 0
--------------------	---------------------------	-----------------	-----------------



ELEV 61

TDZE 61

500

3000

PEYKI

VGSI and RNAV glidepath not coincident (VGSI Angle 3.00/TCH 25).

4 NM Holding Pattern

*LNAV only

HOTAK 2.5 NM to RWY 20

*1.1 NM to RWY 20

880*

1800

2600

6000

3000

GP 3.00° TCH 40

CATEGORY	A	B	C	D
LNAV/VNAV DA	311-1		250 (300-1)	
LNAV MDA	420-1		359 (400-1)	
CIRCLING	520-1	459 (500-1)	520-1½ 459 (500-1½)	700-2 639 (700-2)