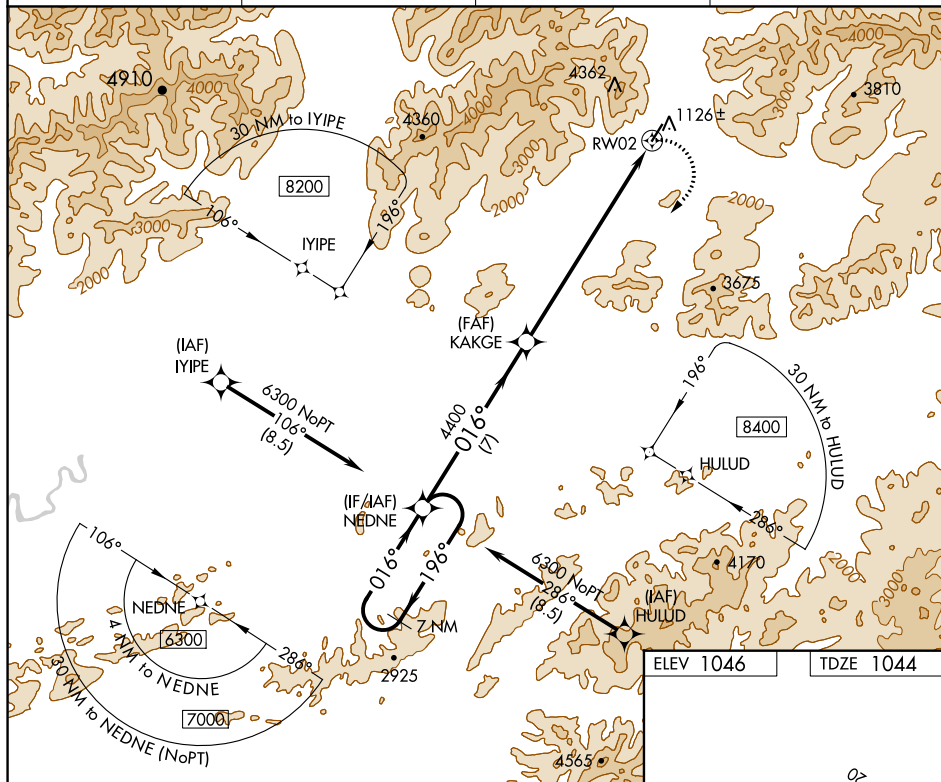


WAAS CH <b>93727</b> <b>W02A</b>	APP CRS <b>016°</b>	Rwy Idg <b>4011</b> TDZE <b>1044</b> Apt Elev <b>1046</b>
--	------------------------	---

RNAV (GPS) RWY 2  
COLDFOOT (CXF) (PACX)

<p><b>NA</b></p> <p><b>NA</b></p> <p><b>NA</b></p>	<p>Circling NA for Cats B and C west of Rwy 2-20. DME/DME RNP-0.3 NA. Rwy 2 helicopter visibility reduction below <math>\frac{3}{4}</math> SM NA. Use Beetles altimeter setting, when not received, procedure NA. Circling Rwy 20 NA at night.</p>	<p><b>MISSED APPROACH:</b></p> <p>Climbing right turn to 6300 direct NEDNE and hold.</p>
--	--	--

BTT/PABT ASOS <b>135.45</b>	ANCHORAGE CENTER <b>124.6 352.0</b>	FAIRBANK RADIO <b>122.0</b>	CTAF <b>122.90</b>
--------------------------------	--	--------------------------------	-----------------------



Visual Segment - Obstacles.

7 NM Holding Pattern

6300 ← 196 → 016° 016° 4400

NEDNE KAKGE

7 NM 8.5 NM

RW02

CATEGORY	A	B	C	D
LP MDA	4160-1¼ 3116 (3200-1¼)	4160-1½ 3116 (3200-1½)	4160-3 3116 (3200-3)	NA
LNAV MDA	4340-1¼ 3296 (3300-1¼)	4340-1½ 3296 (3300-1½)	4340-3 3296 (3300-3)	NA
<b>C</b> CIRCLING	4340-1¼ 3294 (3300-1¼)	4340-1½ 3294 (3300-1½)	4340-3 3294 (3300-3)	NA

