

KOYUKUK, ALASKA

AL-10161 (FAA)



19339

WAAS CH 99314 W24A	APP CRS 242°	Rwy Idg 4000 TDZE 149 Apt Elev 149
--	------------------------	---

RNAV (GPS) RWY 24

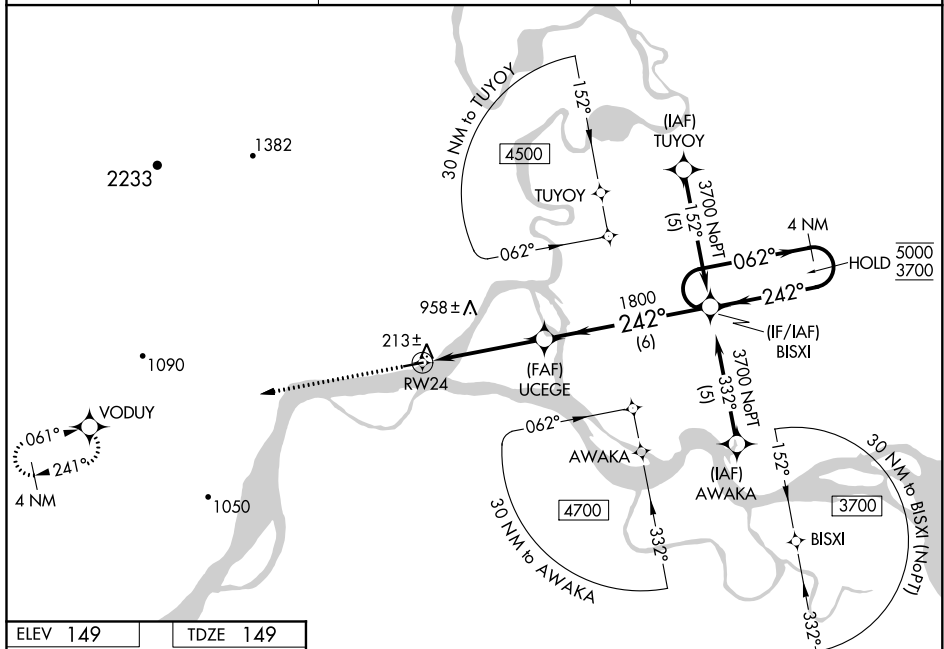
KOYUKUK (KYU) (PFKU)

RNP APCH.

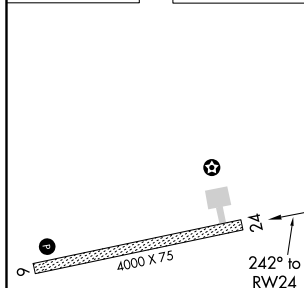
	Rwy 24 helicopter visibility reduction below 1 SM NA. Baro-VNAV NA.
 NA	Use Galena altimeter setting; when not received, procedure NA. Straight-in
 -25°C	and Circling Rwy 24 NA at night.

MISSED APPROACH: Climb to 3900 direct VODUY and hold, continue climb-in-hold to 3900.

GAL/PAGA AWOS-3 132.525	ANCHORAGE CENTER 127.0 290.2	CTAF 122.9 0
-----------------------------------	--	------------------------



ELEV 149		TDZE 149
----------	--	----------



		4.4 NM		6 NM			
CATEGORY		A		B		C	
LPV	DA	484-1 335 (400-1)					NA
LNAV/ VNAV	DA	537-1¼ 388 (400-1¼)					NA
LNAV	MDA	1060-1¼ 911 (1000-1¼)			1060-2¾ 911 (1000-2¾)		NA
CIRCLING		1060-1¼ 911 (1000-1¼)			1060-2¾ 911 (1000-2¾)		NA

REIL Rwy 6 L

MIRL Rwy 6-24 **L**

KOYUKUK, ALASKA

64°53'N-157°44'W

KOYUKUK (KYU) (PFKU)

RNAV (GPS) RWY 24

AK, 31 DEC 2020 to 25 FEB 2021