

APP CRS	Rwy Idg	3300
204°	TDZE	107
	Apt Elev	107

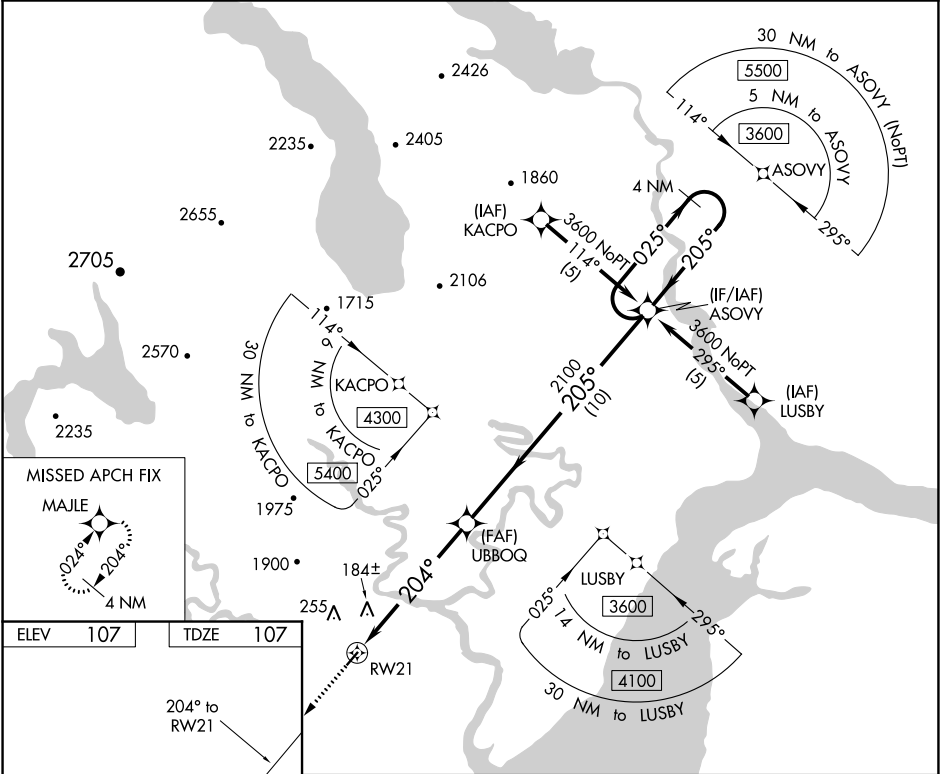
RNAV (GPS) RWY 21
MANOKOTAK (MBA) (PAMB)

⚠ Circling NA northwest of Rwy 3 and 21. DME/DME RNP-0.3 NA. VDP NA when using Dillingham altimeter setting. When local altimeter setting not received use Dillingham altimeter setting and increase all MDA 40 feet and increase LNAV Cat D visibility ¼ SM. Rwy 21 helicopter visibility below 1 SM NA.

❄ -34°C

MISSSED APPROACH: Climb to 2800 direct MAJLE and hold.

AWOS-3P 120.625	ANCHORAGE CENTER 132.75 282.35	CTAF 122.9
--------------------	-----------------------------------	---------------



MISSSED APCH FIX

MAJLE

024° to MAJLE

4 NM

ELEV 107 TDZE 107

204° to RW21

3000 X 75

0.8% UP

2800 MAJLE

0.9 NM to RW21

3.04° TCH 40

204° to RW21

205° to ASOVY

ASOVY 4 NM Holding Pattern

025° to 3600

205° to 3600

2100

0.9 NM to RW21

5.1 NM to ASOVY

10 NM to ASOVY

CATEGORY	A	B	C	D
LNAV MDA	440-1	333 (400-1)		
CIRCLING	540-1 433 (500-1)	560-1 453 (500-1)	560-1½ 453 (500-1½)	660-2 553 (600-2)

AK, 31 DEC 2020 to 25 FEB 2021

AK, 31 DEC 2020 to 25 FEB 2021