

WAAS CH 77807 W21A	APP CRS 211°	Rwy Idg TDZE 658 Apt Elev 658
--	------------------------	---

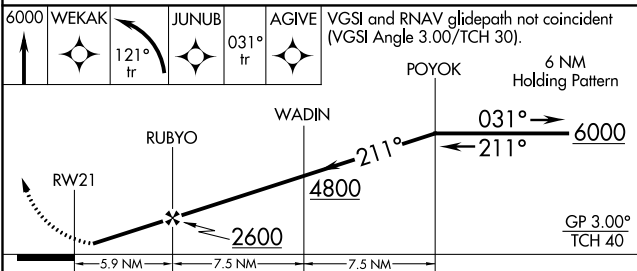
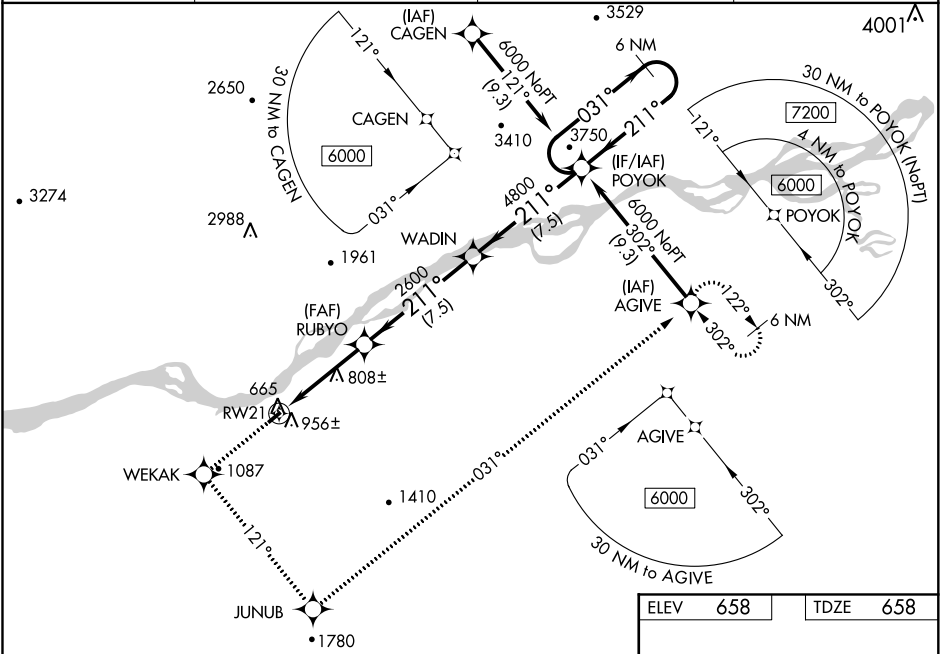
RNAV (GPS) RWY 21

RUBY (RBY) (PARY)

Baro-VNAV NA when using Galena altimeter setting. For uncompensated Baro-VNAV systems, LNAV/VNAV NA below -16°C (4°F) or above 54°C (130°F). DME/DME RNP-0.3 NA. Visibility reduction by helicopters NA. When local altimeter setting not received, use Galena altimeter setting and increase all DA/MDA 340 feet; increase LPV visibility all Cats and LNAV Cat C 1 ¼ mile, LNAV/ VNAV all Cats visibility 2 miles, LNAV Cats A/B and Circling Cats A/B visibility ½ mile, Circling Cat C visibility 1 mile.

MISSED APPROACH: Climb to 6000 direct WEKAK and left turn via 121° track to JUNUB and via 031° track to AGIVE and hold.

AWOS-3P 118.25	ANCHORAGE CENTER 127.0 290.2	FAIRBANKS RADIO 122.25	CTAF 122.8 0
--------------------------	--	----------------------------------	------------------------



ELEV 658 TDZE 658

211° to RW21

0.25% UP 4000 X 100

REIL Rwy 21 0 MIRL Rwy 3-21 0

CATEGORY	A	B	C	D
LPV DA	919-1	261 (300-1)		NA
LNAV/ VNAV DA	1199-2	541 (600-2)		NA
LNAV MDA	1220-1 562 (600-1)	1220-1½ 562 (600-1½)		NA
CIRCLING	1260-1 602 (700-1)	1260-1¾ 602 (700-1¾)		NA

AK, 31 DEC 2020 to 25 FEB 2021

AK, 31 DEC 2020 to 25 FEB 2021