

APP CRS
253°

Rwy Idg	3280
TDZE	57
Apt Elev	57

RNAV (GPS) RWY 25

PILOT POINT (PNP)(PAPN)

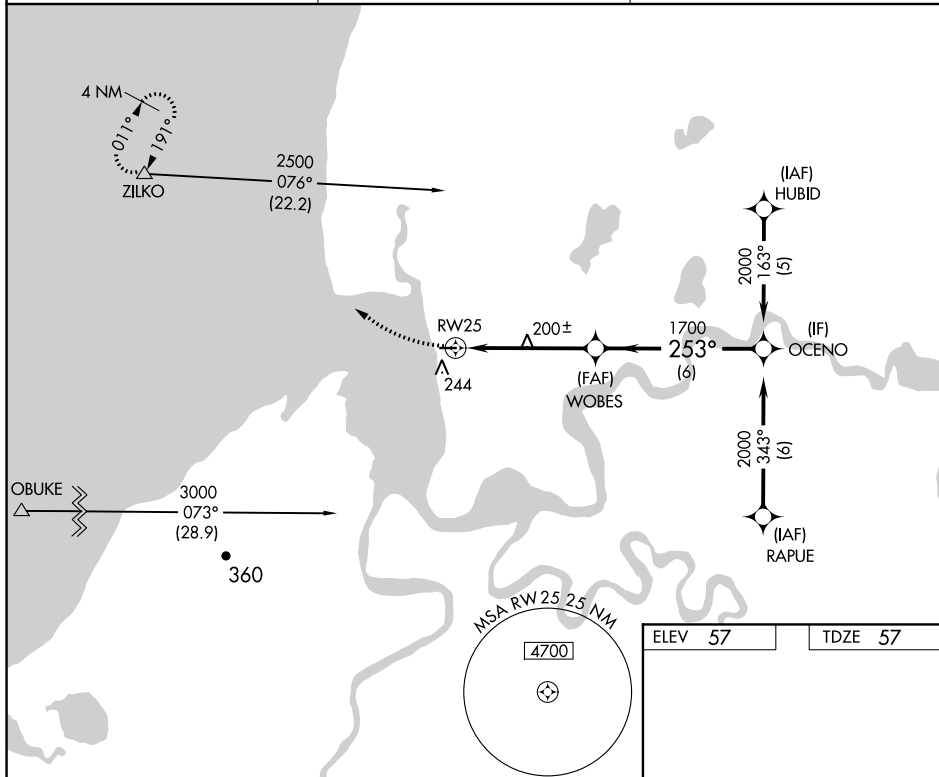


DME/DME RNP-0.3 NA. When local altimeter setting not received, use King Salmon altimeter setting and increase all MDA 180 feet.

MISSED APPROACH: Climbing right turn to 2500 direct ZILKO and hold.

AWOS-3P
118.375

ANCHORAGE CENTER
132.9 288.3

CTAF
122.9 **L**

2500

ZILKO
△

Visual Segment - Obstacles.

WOBES

OCENO

2000

RW25

253°—

700

5 N

CATEGORY

A

B

D

LNAV MD.

54

-1 483 (500-1)

NA

CIRCLING

60

-1 543 (600-1)

NA

MIRI R_{WV} 7-25 

0.

75

0.

3280 :

253°
RW2