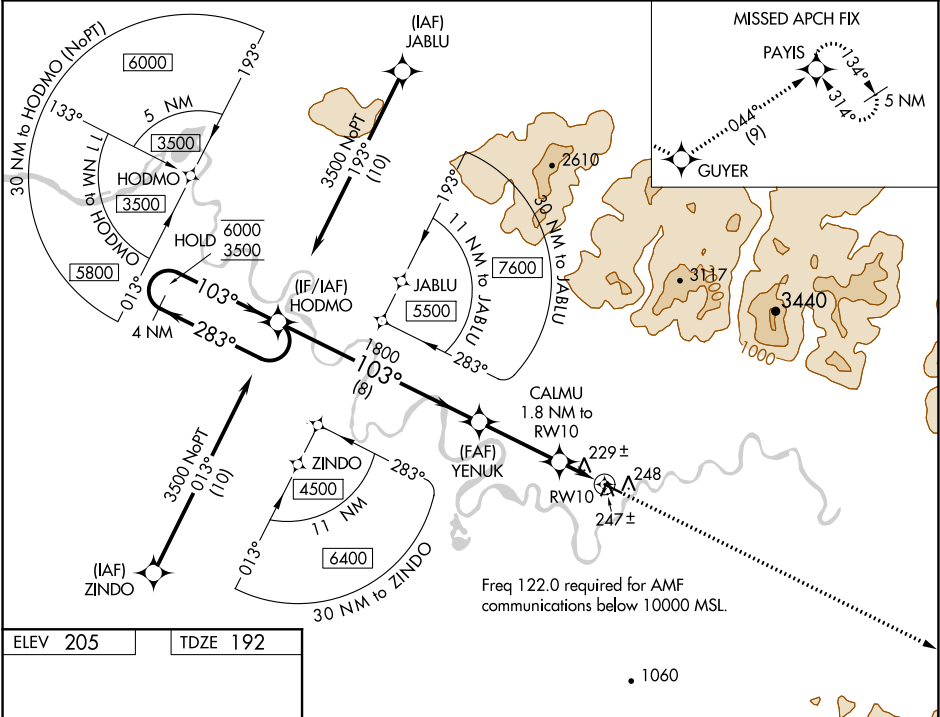


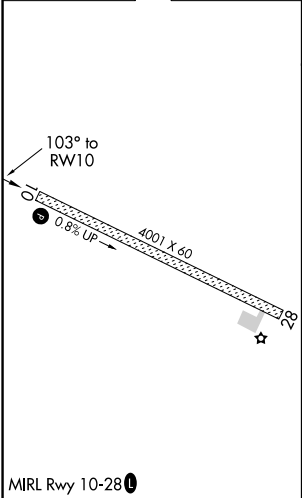
WAAS CH 50226 W10A	APP CRS 103°	Rwy Idg TDZE Apt Elev	4001 192 205
--	------------------------	-----------------------------	---

RNAV (GPS) RWY 10
SHUNGNAK (SHG)(PAGH)

RNP APCH Circling to Rwy 28 NA at night. -36°C		MISSED APPROACH: Climb to 6000 direct GUYER and on track 044° to PAYIS and hold, continue climb-in-hold to 6000.	
AWOS-3P 118.525	ANCHORAGE CENTER 119.2	KOTZEBUE RADIO 122.0	CTAF 122.7



ELEV 205	TDZE 192
----------	----------



HODMO 4 NM Holding Pattern		YENUK	6000	GUYER	tr 044°	PAYIS
6000 ← 283° 3500 → 103°		103°	3.00°	CALMU 1.8 NM to RWY 10 TCH 35	1800	780
8 NM		3.2 NM	0.9 NM	0.9 NM	RWY 10	
CATEGORY	A	B	C	D		
LP MDA	480-1	288 (300-1)		NA		
LNAV MDA	540-1	348 (400-1)		NA		
CIRCLING	600-1 395 (400-1)	660-1 455 (500-1)	660-1½ 455 (500-1½)	NA		

AK, 31 DEC 2020 to 25 FEB 2021

AK, 31 DEC 2020 to 25 FEB 2021