

APP CRS	Rwy Idg	3281
137°	TDZE	364
	Apt Elev	364

RNAV (GPS) RWY 14

NEW STUYAHOK (KNW) (PANW)

▼

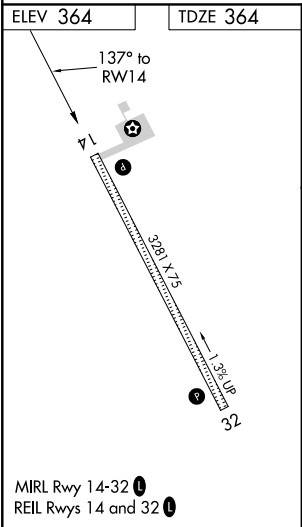
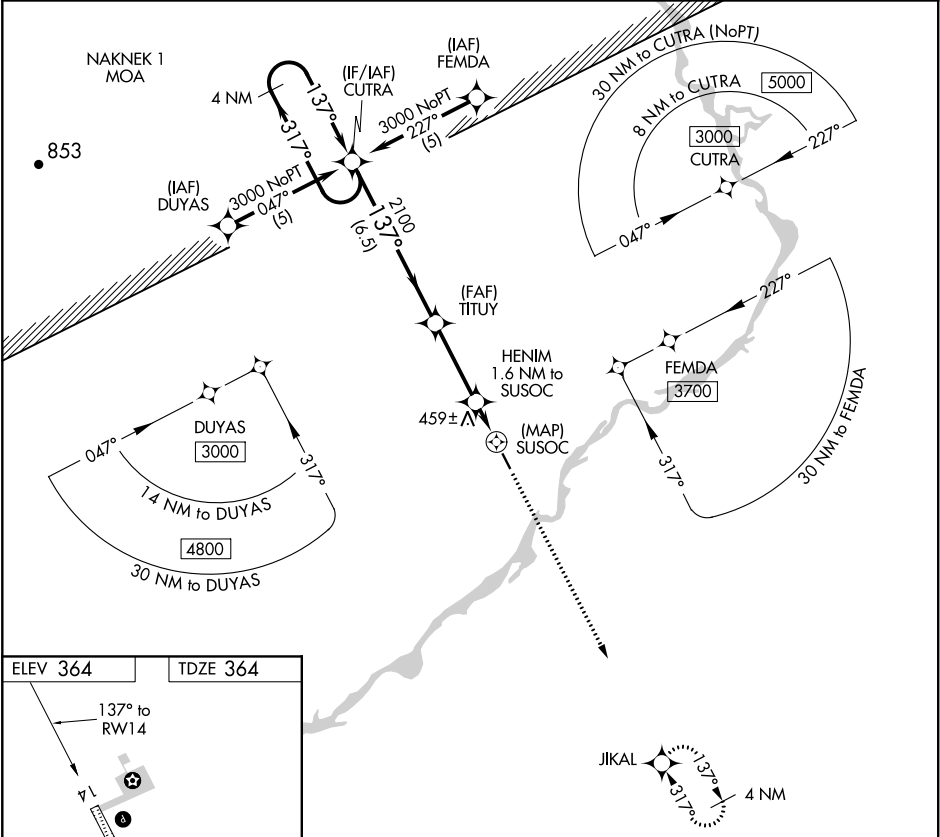
When local altimeter setting not received, use Koliganek altimeter setting and increase all MDAs 60 feet. Procedure NA at night.

⚠

DME/DME RNP-0.3 NA. Visibility reduction by helicopters NA.

MISSED APPROACH: Climb to 3000 direct JIKAL and hold.

AWOS-3P 120.275	ANCHORAGE CENTER 132.75 282.35	DILLINGHAM RADIO 122.55	CTAF 122.9
--------------------	-----------------------------------	----------------------------	---------------



4 NM Holding Pattern	CUTRA	TITUY	HENIM 1.6 NM to SUSOC	SUSOC	JIKAL
3000	317°	137°	3.05°	TCH 35	3000
	137°	2100		1060	
	6.5 NM	3.2 NM	1.6 NM	0.5	
CATEGORY	A	B	C	D	
LNNAV MDA	780-1	416 (500-1)	NA		
CIRCLING	780-1	840-1	NA		
	416 (500-1)	476 (500-1)			