

WAAS CH 78143 W08A	APP CRS 080°	Rwy Idg TDZE Apt Elev	2983 299 299
--	------------------------	-----------------------------	---

RNAV (GPS) RWY 8

TELLER (TER) (PATE)

RNP APCH.

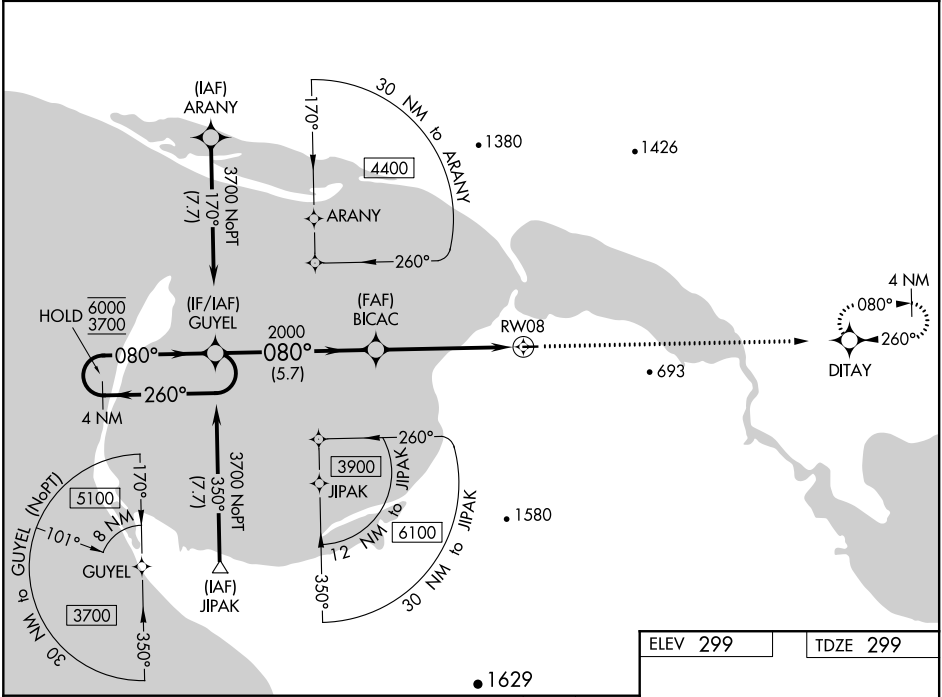
▼

▲

Circling NA south of Rwy 8-26. For uncompensated Baro-VNAV systems, LNAV/VNAV NA below -23°C or above 54°C.

MISSED APPROACH: Climb to 3700 direct DITAY and hold, continue climb-in-hold to 3700.

AWOS-3P 118.375	ANCHORAGE CENTER 133.3 290.4	NOME RADIO 135.6	CTAF 123.0
---------------------------	--	----------------------------	----------------------



GUYEL		BICAC		RW08	
4 NM Holding Pattern		2000		1.7 NM to RW08	
6000 ← 260°		080° →		080°	
3700		2000		2000	
GP 3.00°		-5.7 NM		3.6 NM	
TCH 40		1.7 NM		1.7 NM	
CATEGORY	A	B	C	D	
LPV DA	499-1	200 (200-1)		NA	
LNAV/VNAV DA	655-1	356 (400-1)		NA	
LNAV MDA	860-1	561 (600-1)	860-1½ 561 (600-1½)	NA	
CIRCLING	860-1 561 (600-1)	900-1 601 (700-1)	1060-2¼ 761 (800-2¼)	NA	

ELEV 299 TDZE 299

3700 DITAY

* LNAV only

* 1.7 NM to RW08

RW08

2983 X 60

0.6% UP

080° to RW08

MIRL Rwy 8-26