





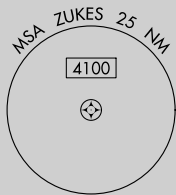
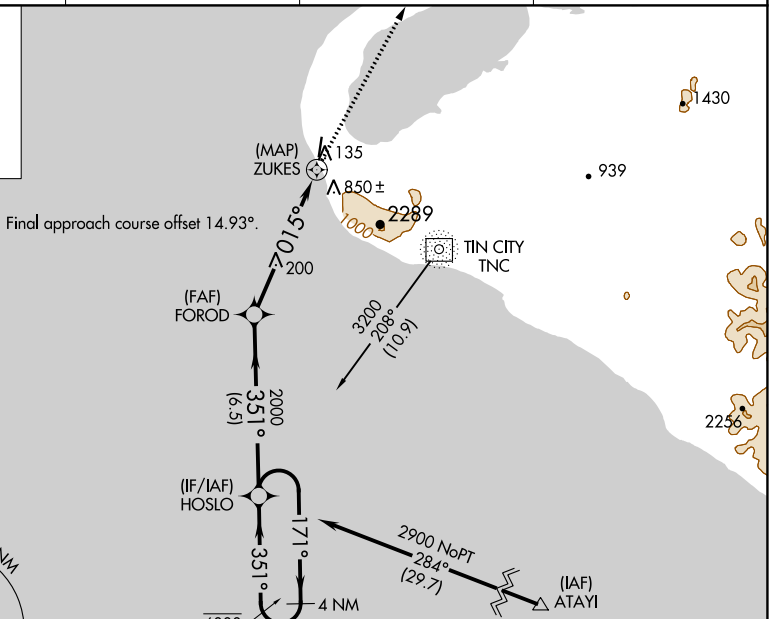
20254

RNAV (GPS) RWY 36
WALES (IWK) (PAIW)

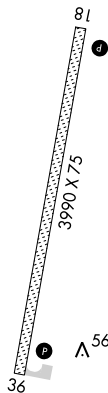


 -27°C

MISSED APPROACH: Climbing right turn to 3000 direct COGNUM and hold.

AWOS-3P 118.525	ANCHORAGE CENTER 133.3 290.4	NOME RADIO 122.6	CTAF 123.0 
---------------------------	----------------------------------------	----------------------------	--------------------------------------------------------------------------------------------------------



ELEV 26		TDZE 26
---------	--	---------



MIRL Rwy 18-36 **L**
REIL Rwy 18 and 36 **L**

4 NM Holding Pattern HOSLO

VGSI and descent angles not coincident (VGSI Angle 3.00/TCH 26).

3000 COGNO

FOROD

2.000 ← 171° 351° → 2.000

3.00° TCH 30

1.3 NM to ZUKES

ZUKES

0.5 NM

CATEGORY	A	B	C	D
LP MDA	460-1	434 (500-1)	460-1¼	434 (500-1¼)
LNAV MDA	920-1¼	894 (900-1¼)	920-2½	894 (900-2½)
C CIRCLING	920-1¼	894 (900-1¼)	920-2¾ 894 (900-2¾)	920-3 894 (900-3)

WALES (IWK) (PAIW)
RNAV (GPS) RWY 36