

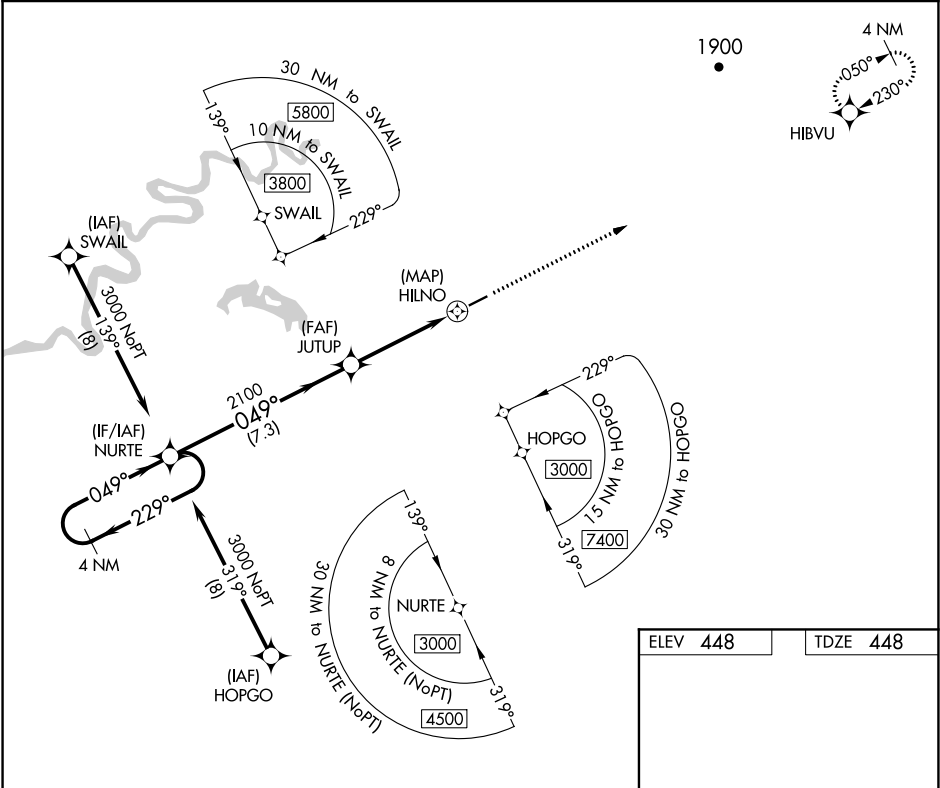
APP CRS	Rwy Idg	4001
049°	TDZE	448
	Apt Elev	448

RNAV (GPS) RWY 5

NIKOLAI (FSP)(PAFS)

RNP APCH.	MISSED APPROACH: Climb to 5000 direct HIBVU and hold, continue climb-in-hold to 5000.
Rwy 5 helicopter visibility reduction below ¾ SM NA.	

AWOS-3P 118.325	ANCHORAGE CENTER 128.1 353.8	CTAF 122.8
--------------------	---------------------------------	---------------



ELEV 448

TDZE 448

MIRL Rwy 5-23

REIL Rwy 5 and 23

VGSI and descent angles not coincident (VGSI Angle 3.20/TCH 26).				
4 NM Holding Pattern		5000	HIBVU	
3000		2100	HILNO	
229°		049°	0.8 NM to HILNO	
7.3 NM		3.5 NM	0.8	0.5
CATEGORY	A	B	C	D
RNAV MDA	900-1	452 (500-1)	900-1 3/8	452 (500-1 3/8)
CIRCLING	900-1	452 (500-1)	900-1 1/2	1000-2
			452 (500-1 1/2)	552 (600-2)

AK, 31 DEC 2020 to 25 FEB 2021

AK, 31 DEC 2020 to 25 FEB 2021