

WAAS CH 45610 W16A	APP CRS 165°	Rwy Idg 3400 TDZE 79 Apt Elev 79
--	------------------------	---

RNAV (GPS) RWY 16

SHAGELUK (SHX) (PAHX)

RNP APCH.

▼

⚠

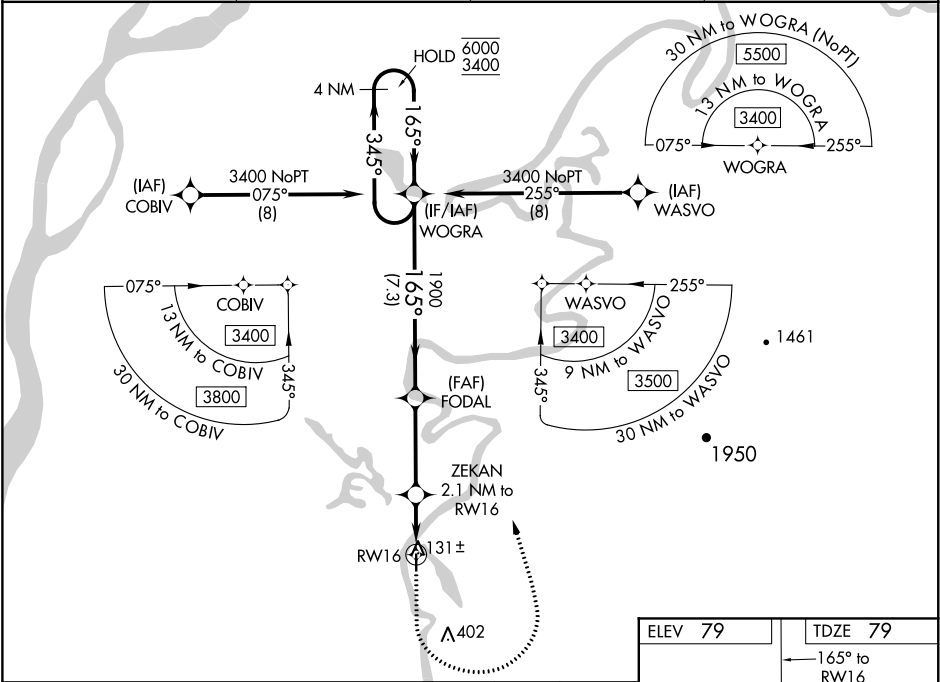
✳

For uncompensated Baro-VNAV systems, LNAV/VNAV NA below -25°C or above 54°C.

Circling NA for Cats C and D east of Rwy 16-34.

MISSED APPROACH: Climb to 1000 then climbing left turn to 3400 direct WOGRA and hold.

AWOS-3P 121.575	ANCHORAGE CENTER 135.7 335.5	KENAI RADIO 122.4	UNICOM 122.8 (CTAF)
---------------------------	--	-----------------------------	-------------------------------



<div>4 NM Holding Pattern</div> <div>6000 ← 345° 3400 ← 165°</div> <div>GP 3.00° TCH 40</div>				
<div>WOGRA</div> <div>FODAL</div> <div>ZEKAN 2.1 NM to RW16</div> <div>* 1.4 NM to RW16</div> <div>* 800</div> <div>7.3 NM</div> <div>3.5 NM</div> <div>0.7</div> <div>1.4 NM</div>				
CATEGORY	A	B	C	D
LPV DA		329-1	250 (300-1)	
LNAV/VNAV DA		329-1	250 (300-1)	
LNAV MDA		400-1	321 (400-1)	
CIRCLING	460-1 381 (400-1)	540-1 461 (500-1)	540-1½ 461 (500-1½)	800-2¼ 721 (800-2¼)

ELEV 79

TDZE 79

Water Rwy: 18W-36W 5000 X 1000

9 L

3400 X 75

34

MIRL Rwy 16-34

REIL Rwy 34