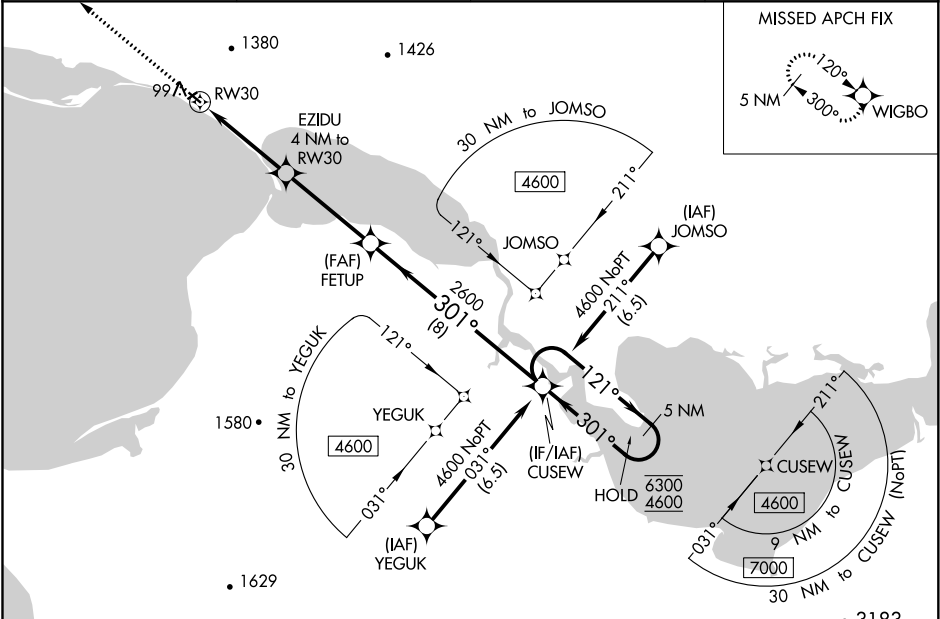


WAAS CH 81928 W30A	APP CRS 301°	Rwy Idg 2990 TDZE 37 Apt Elev 38
--	------------------------	---

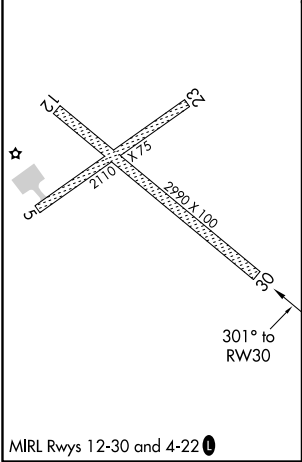
RNAV (GPS) RWY 30
BREVIG MISSION (KTS)(PFKT)

RNP APCH. ▼ ▲ ❄ -26°C	Circling NA north of Rwsy 12 and 23. Circling Rwy 23 NA at night. For uncompensated Baro-VNAV systems, LNAV/VNAV NA below -25° C or above 54°C.	MISSED APPROACH: Climb to 5100 direct WIGBO and hold, continue climb-in-hold to 5100.
--------------------------------	--	---

AWOS-3P 121.55	ANCHORAGE CENTER 133.3 290.4	NOME RADIO 135.6	CTAF 123.00
--------------------------	--	----------------------------	-----------------------



ELEV 38	TDZE 37
----------------	----------------



5100

WIGBO

*LNAV only.

CATEGORY	A		B	C	D
LPV DA	287-1¼ 250 (300-1¼)		287-1 250 (300-1)		NA
LNAV/VNAV DA	960-4 923 (1000-4)				NA
LNAV MDA	1080-1¼ 1043 (1100-1¼)	1080-1½ 1043 (1100-1½)	1080-3 1043 (1100-3)		NA
CIRCLING	1080-1¼ 1042 (1100-1¼)	1460-2½ 1422 (1500-2½)	1580-3 1542 (1600-3)		NA

AK, 31 DEC 2020 to 25 FEB 2021

AK, 31 DEC 2020 to 25 FEB 2021