

APP CRS  
**003°**

Rwy Idg  
TDZE  
Apt Elev  
**3200**  
**80**  
**80**

**RNAV (GPS) RWY 36**  
CLARKS POINT (CLP) (PFCL)

▼

▲ NA

❄ -34°C

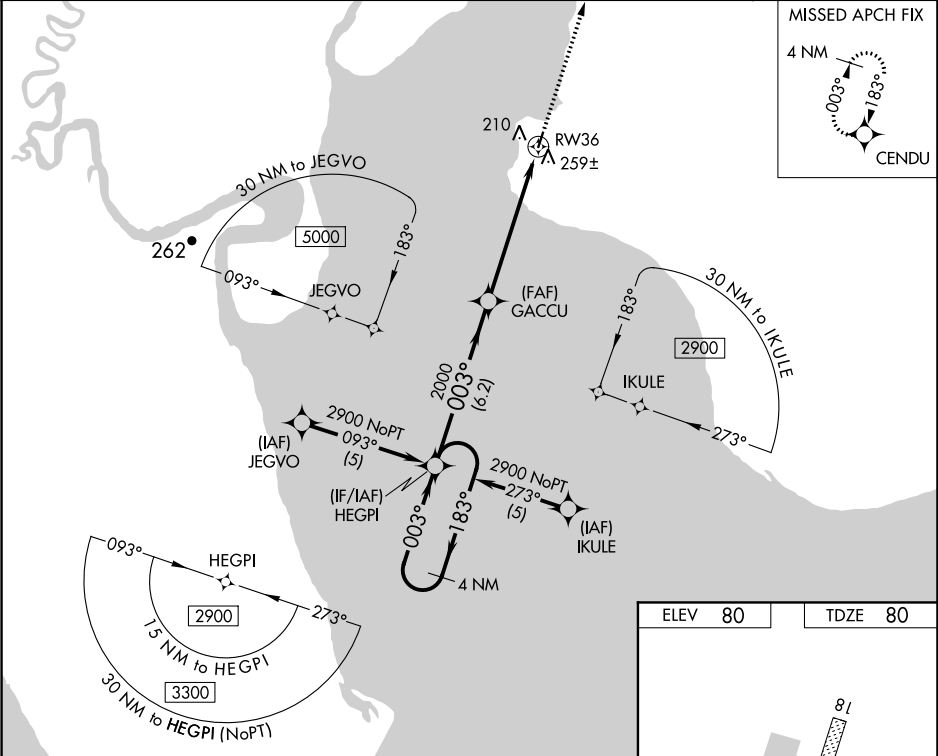
DME/DME RNP-0.3 NA. Procedure NA at night.

When local altimeter setting not received, use Dillingham altimeter setting.

Rwy 36 helicopter visibility reduction below 1 SM NA.

MISSED APPROACH: Climb to 2900 direct CENDU and hold.

AWOS-3P <b>135.55</b>	DLG/PADL AWOS-3P <b>125.0</b>	ANCHORAGE CENTER <b>132.75 282.35</b>	CTAF <b>122.9 0</b>
--------------------------	----------------------------------	--	------------------------



4 NM Holding Pattern

HEGPI

2900

183°

003°

003°

2000

GACCU

3.05° TCH 40

RW36

6.2 NM

5.8 NM

2900 CENDU

ELEV 80

TDZE 80

81

3200 x 60

36

003° to RW36

MIRL Rwy 18-36 0

CATEGORY	A	B	C	D
LNAV MDA	540-1	460 (500-1)	540-1¼ 460 (500-1¼)	540-1½ 460 (500-1½)
CIRCLING	600-1	520 (600-1)	600-1½ 520 (600-1½)	640-2 560 (600-2)

AK, 31 DEC 2020 to 25 FEB 2021

AK, 31 DEC 2020 to 25 FEB 2021