




APP CRS <b>040°</b>	Rwy Idg TDZE Apt Elev	<b>4000</b> <b>572</b> <b>574</b>
------------------------	-----------------------------	---

# RNAV (GPS) RWY 4

## VENETIE (VEE) (PAVE)

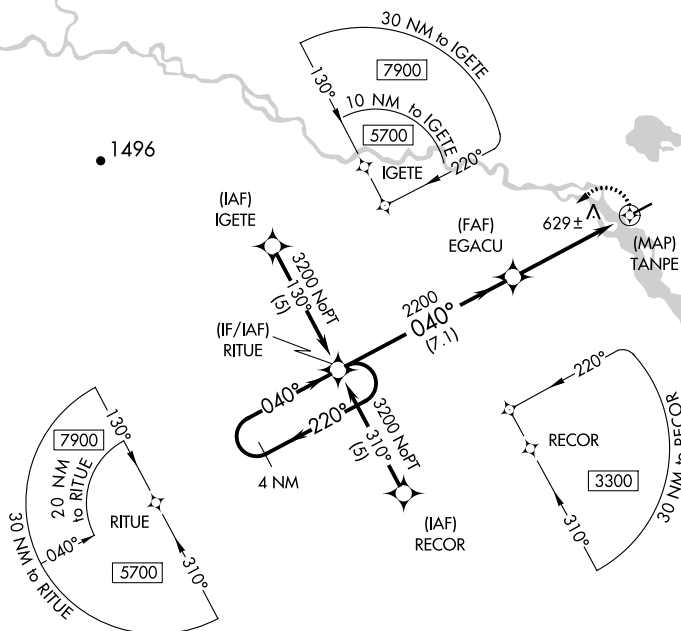
	Use Fort Yukon altimeter setting; when not received procedure NA.
 NA	Procedure NA at night. DME/DME RNP-0.3 NA.
 -42°C	Helicopter visibility reduction below 1 SM NA.

**MISSED APPROACH:** Climbing left turn to 3200 direct RITUE and hold.

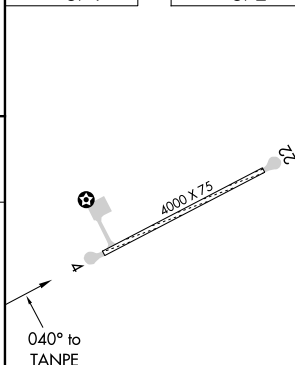
FYU/PFYU AWOS-3P  
**125.8**

ANCHORAGE CENTER  
135.0 284.7

CTAF  
122.9 **L**



ELEV 574		TDZE 572
----------	--	----------

MIRL Rwy 4-22 **L**

VENETIE, ALASKA  
Orig-B 26MAY16

67°01'N-146°22'W

VENETIE (VEE) (PAVE)  
RNAV (GPS) RWY 4