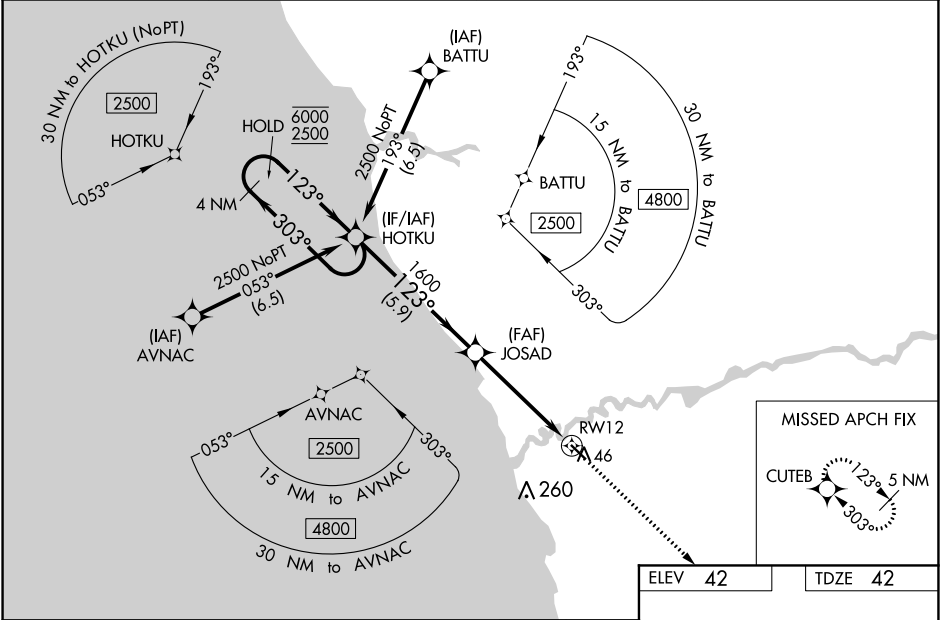


WAAS CH <b>99311</b> <b>W12A</b>	APP CRS <b>123°</b>	Rwy Idg <b>4000</b> TDZE <b>42</b> Apt Elev <b>42</b>
--	------------------------	---

RNAV (GPS) RWY 12  
QUINHAGAK (AQH) (PAQH)

RNP APCH.	Procedure NA at night. Baro-VNAV and VDP NA when using Kipnuk altimeter setting. For uncompensated Baro-VNAV systems, LNAV/VNAV NA below -21°C or above 54°C. When local altimeter setting not received, use Kipnuk altimeter setting and increase all DA and MDA 160 feet; increase LPV all Cats visibility and LNAV/VNAV all Cats visibility ½ SM, LNAV Cats C, D visibility ¾ SM, increase Circling Cat C visibility ½ SM, increase Circling Cat D visibility ¼ SM.	MISSED APPROACH: Climb to 5200 direct CUTEb and hold, continue climb-in-hold to 5200.
-----------	--	---

AWOS-3P <b>121.575</b>	ANCHORAGE CENTER <b>125.2 372.0</b>	KENAI RADIO <b>122.1</b>	UNICOM <b>122.8 (CTAF) 0</b>
---------------------------	--	-----------------------------	---------------------------------



4 NM Holding Pattern		HOTKU		JOSAD		5200 ↑		CUTEB ✧	
6000 2500		←303° 123°→		123° 1600		*1.4 NM to RW12		*LNAV only.	
GP 3.00° TCH 35		5.9 NM		3.4 NM		1.4 NM		RW12	
CATEGORY		A		B		C		D	
LPV DA		292-1		250 (300-1)					
LNAV/ VNAV DA		292-1		250 (300-1)					
LNAV MDA		500-1 458 (500-1)		500-1 3/8 458 (500-1 3/8)					
CIRCLING		500-1 458 (500-1)		580-1 1/2 538 (600-1 1/2)		600-2 558 (600-2)			

123° to  
RW12

64 ± Δ

4000 X 75

30

MIRL Rwy 12-30