

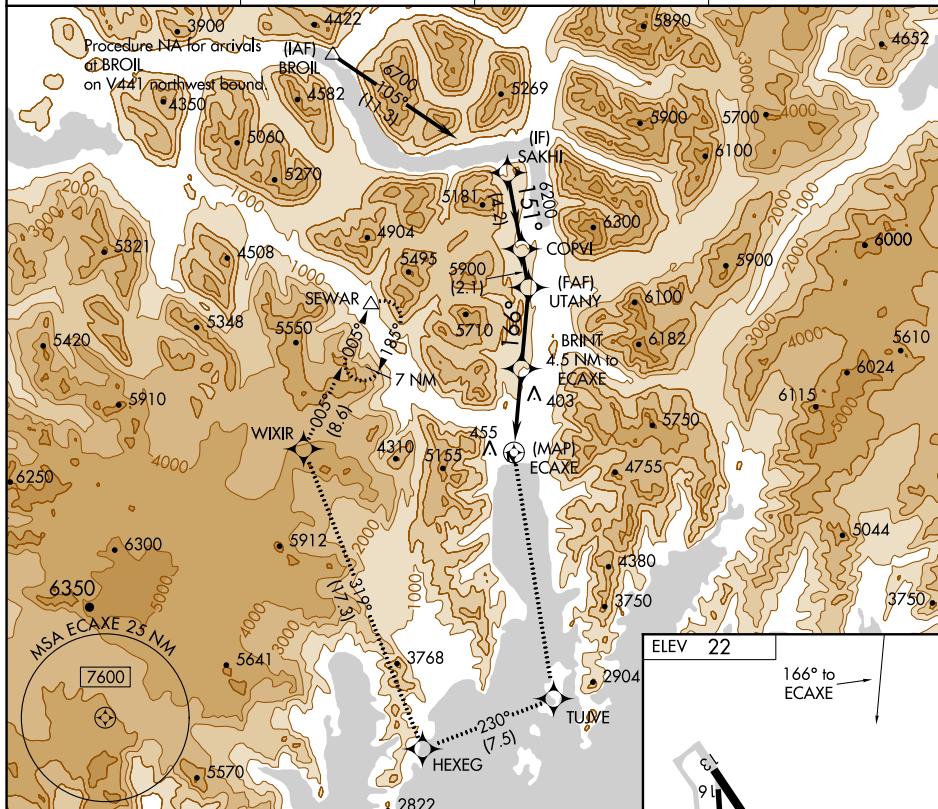
APP CRS 166°	Rwy Idg TDZE Apt Elev	N/A N/A 22
------------------------	-----------------------------	---------------------------------------

RNAV (GPS)-A
SEWARD (SWD) (PAWD)

T When local altimeter setting not received, procedure NA.
A Circling NA southwest of Rwy 13 and 34. Procedure
☔ NA at night. DME/DME RNP-0.3 NA. Helicopter visibility
 -4°C reduction below 1 SM NA.

MISSED APPROACH: Climb to 9500 direct TUJVE and on track 230° to HEXEG and on track 319° to WIXIR and on track 005° to SEWAR and hold.

ASOS 135.2	ANCHORAGE CENTER 119.7 269.0	KENAI RADIO 122.6	CTAF 122.9 0
----------------------	--	-----------------------------	------------------------



SAKHI		9500 ↑	TUJVE ✱	tr 230°	HEXEG ✱	tr 319°	WIXIR ✱	tr 005°	SEWAR △
CATEGORY	A		B		C		D		
CIRCLING	2660-1¼ 2638 (2700-1¼)		2660-1½ 2638 (2700-1½)				NA		

