

RNAV (GPS) RWY 35

APCH CRS **346°**
 Rwy Idg **3820**
 THRE **891**
 Arpt Elev **933**

AL-10651 (USAF)

TATALINA LRSS (PATL)

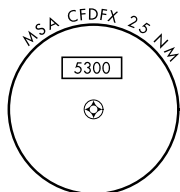
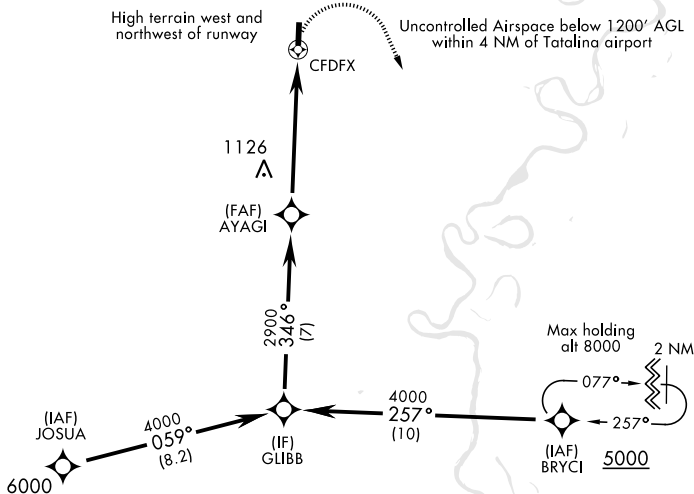
✈ * Circling not authorized west of Runway 17/35
 DME/DME RNP 0.3 NA
 Night Operations not authorized.

MISSED APPROACH: Climbing right turn to 5000 direct
 BRYCI and hold. Continue climb and hold to 5000.

KENAI RADIO
122.3

UNICOM
126.2 (CTAF) 364.2

AWOS-3



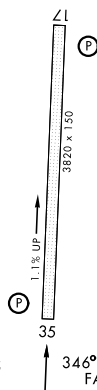
NOT FOR CIVIL USE

MILITARY CERTIFIED AIRCREWS OR AUTHORIZED CONTRACT AIRCRAFT ONLY

EMERG SAFE ALT 100 NM 11,800

ELEV 933 THRE 891

Visual Segment - Obstacles				
CATEGORY	A	B	C	D
RNAV MDA	1640-1 749 (800-1)	1640-1¼ 749 (800-1¼)	1640-2 749 (800-2)	NA
CIRCLING*	1800-1¼ 867 (900-1¼)	2340-1½ 1407 (1500-1½)	2880-3 1947 (2000-3)	NA



REIL Rwy 17-35
 LIRL Rwy 17-35

RNAV (GPS) RWY 35