

APP CRS
083°

Rwy Idg
TDZE
Apt Elev

2661
936
937

RNAV (GPS) RWY 8

CENTRAL (CEM) (PACE)

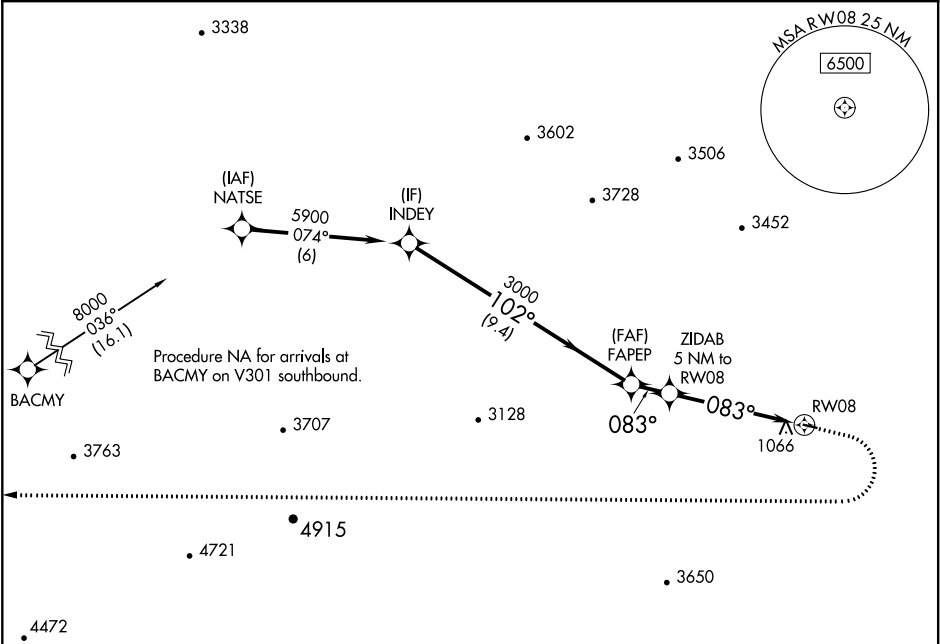
NA

-43°C

DME/DME RNP-0.3 NA. Use Fort Yukon altimeter setting; when not received, procedure NA. Helicopter visibility reduction below 1 SM NA. Night Landing: Rwy 8 NA.

MISSED APPROACH: Climb to 3700 then climbing right turn to 8000 direct BACMY and hold.

| | | |
|---------------------------|---------------------------------|---------------|
| FYU/PFYU AWOS-3P 125.8 | ANCHORAGE CENTER 135.0 284.7 | CTAF 122.9 |
|---------------------------|---------------------------------|---------------|



MISSED APCH FIX

BACMY

036°

216°

7 NM

ELEV 937

TDZE 936

INDEY

Visual Segment - Obstacles.

3700

8000

BACMY

5900

102°

3000

083°

2540

9.4 NM

1.4 NM

5 NM

RWY 08

| CATEGORY | A | B | C | D |
|-----------|---------------------------|---------------------------|----|---|
| LNNAV MDA | 2420-1¼ 1484 (1500-1¼) | 2420-1½ 1484 (1500-1½) | NA | |
| CIRCLING | 2420-1¼ 1483 (1500-1¼) | 2420-1½ 1483 (1500-1½) | NA | |

MIRL Rwy 8-26

083° to RWY 08

2782 X 60

0.7% UP