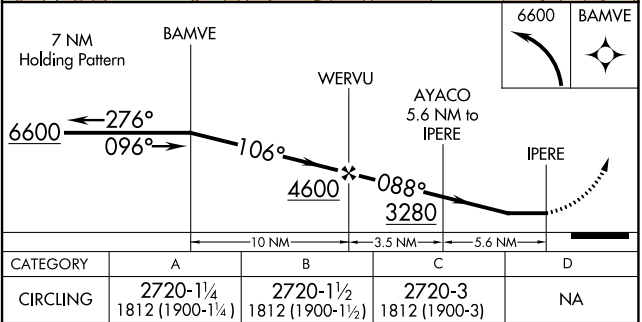
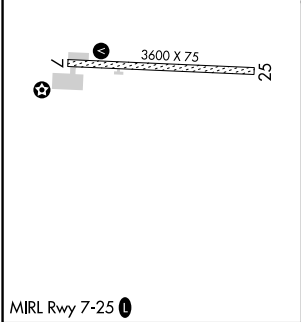
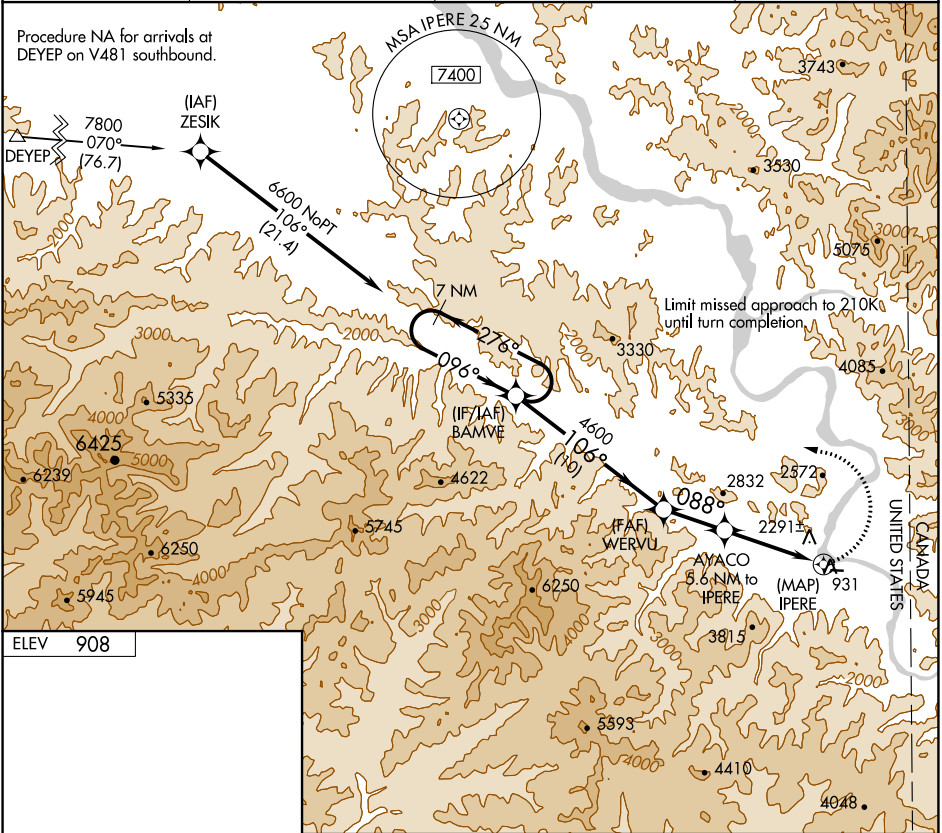


APP CRS	Rwy Idg	N/A
088°	TDZE	N/A
	Apt Elev	908

RNAV (GPS)-A
EAGLE (EAA) (PAEG)

<p>When local altimeter setting not received, procedure NA. DME/DME RNP-0.3 NA. Helicopter visibility reduction below 1 SM not authorized. Procedure NA at night. Circling NA north of Rwy 7-25.</p>	<p>MISSED APPROACH: Climbing left turn to 6600 direct BAMVE and hold, continue climb-in-hold to 6600.</p>
--	---

ASOS 135.55	ANCHORAGE CENTER 135.3 322.5	NORTHWAY RADIO 122.3	UNICOM 122.8 (CTAF)
----------------	---------------------------------	-------------------------	------------------------



MIRL Rwy 7-25	EAGLE, ALASKA Orig 29MAY14	64°47'N-141°09'W	EAGLE (EAA) (PAEG) RNAV (GPS)-A
---------------	-------------------------------	------------------	------------------------------------