

WAAS CH 87137 W31B	APP CRS 306°	Rwy Idg 2755 TDZE 160 Apt Elev 162
--	------------------------	---

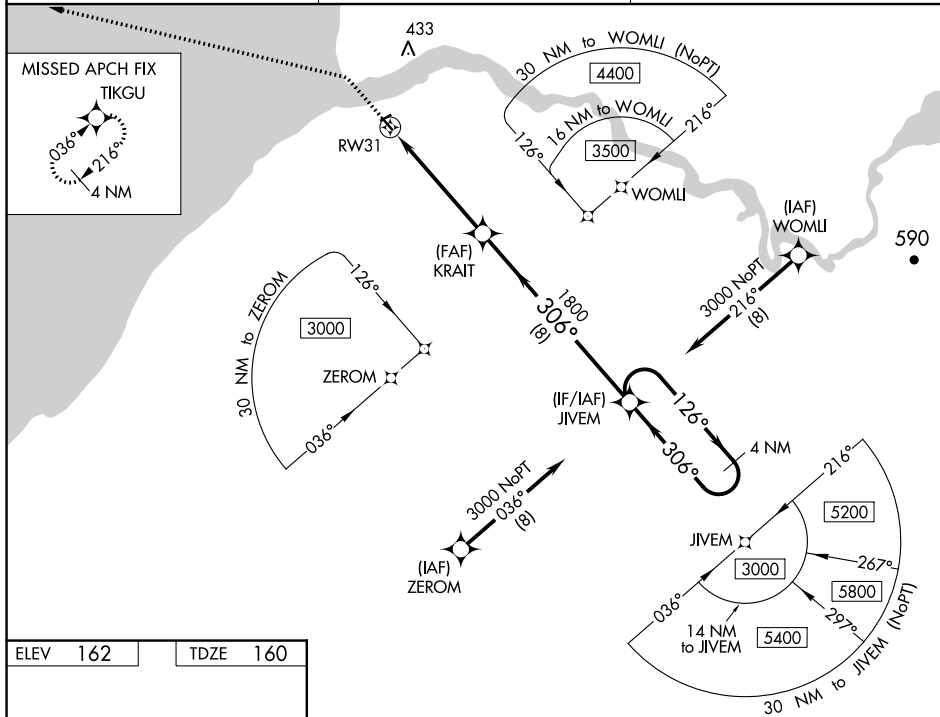
RNAV (GPS) RWY 31
SOUTH NAKNEK NR 2 (WSN)(PFWS)

RNP APCH.

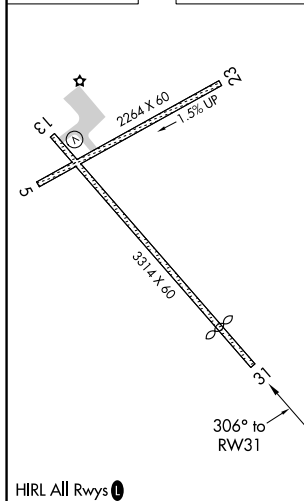
T Baro-VNAV and VDP NA when using King Salmon altimeter setting. For uncompensated Baro-VNAV systems, LNAV/VNAV NA below -21°C or above 54°C. When local altimeter setting not received, use King Salmon altimeter setting and increase all DA/MDA 40 feet. Circling Rwy 5 NA at night.

MISSED APPROACH:
Climb to 700 then
climbing left turn to 3200
direct TIKGU and hold.

AWOS-3P 121.575	ANCHORAGE CENTER 124.8 354.0	CTAF 122.9 0
---------------------------	--	------------------------



ELEV	162		TDZE	160
------	-----	--	------	-----



700
3200
TIKGU

*LNAV only.

*1.6 NM to RW31

KRAIT
1800

JIVEM

126° → 3000
← 306°

306°

1800

GP 3.00°
TCH 35

1.6 NM 3.4 NM 8 NM

CATEGORY	A	B	C	D
LPV DA	410-1	250 (300-1)	NA	
LNAV/ VNAV	410-1	250 (300-1)	NA	
LNAV MDA	700-1	540 (600-1)	NA	
C CIRCLING	700-1	538 (600-1)	NA	