

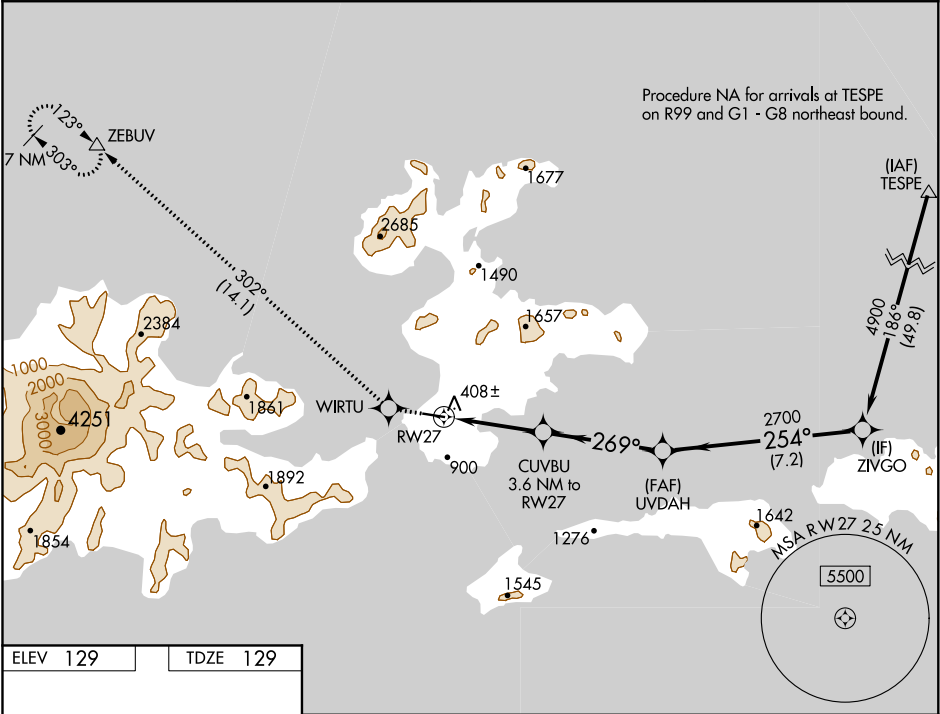
APP CRS	Rwy Idg	4500
269°	TDZE	129
	Apt Elev	129

RNAV (GPS) RWY 27

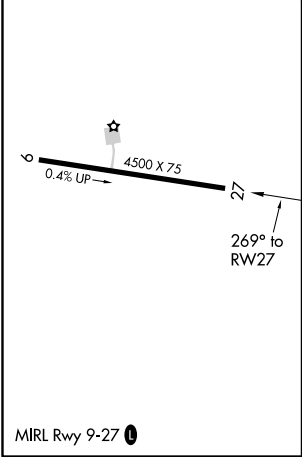
AKUTAN (7AK)(PAUT)

<div><div></div><div>For uncompensated Baro-VNAV systems, LNAV/VNAV NA below -19°C (-2°F) or above 54°C (130°F). DME/DME RNP-0.3 NA. Visibility reduction by helicopters below 1 SM NA. Procedure NA at night.</div></div>	MISSED APPROACH: Climb to 9000 direct WIRTU and on track 302° to ZEBUV and hold, continue climb-in-hold to 9000.
--	--

AWOS-3P 129.05	ANCHORAGE CENTER 121.4	GCO 130.3	CTAF 122.9
-------------------	---------------------------	--------------	---------------



ELEV 129	TDZE 129
----------	----------



9000 ↑	WIRTU ✧	tr 302°	ZEBUV △		
* LNAV only					
CATEGORY	A		B	C	D
LNAV/ VNAV DA	848-2½ 719 (800-2½)				
LNAV MDA	1140-1¼ 1011 (1100-1¼)	1140-1½ 1011 (1100-1½)	1140-3	1011 (1100-3)	
CIRCLING	1140-1¼ 1011 (1100-1¼)	1200-1½ 1071 (1100-1½)	1600-3 1471 (1500-3)	1960-3 1831 (1900-3)	