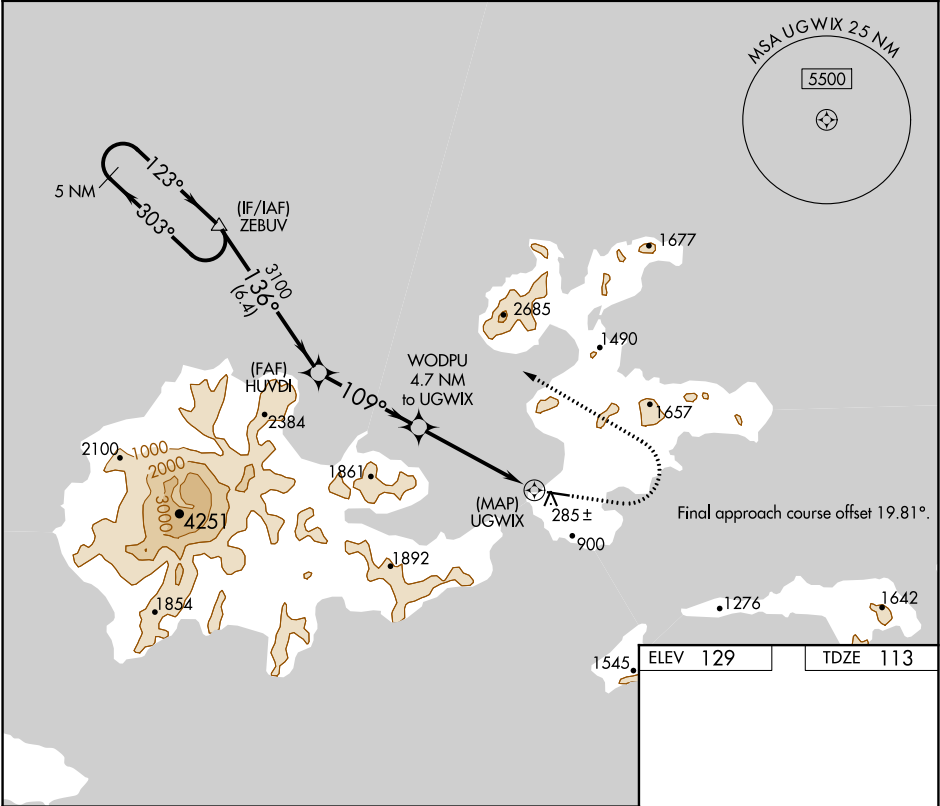


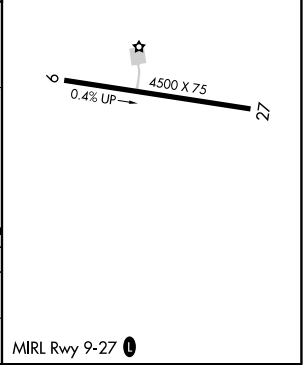
APP CRS	Rwy Idg	4500
109°	TDZE	113
	Apt Elev	129

RNAV (GPS) RWY 9  
AKUTAN (7AK)(PAUT)

<div><div></div><div></div></div> DME/DME RNP-0.3 NA. Procedure NA at night.		MISSED APPROACH: Climb to 2800 then climbing left turn to 9000 direct ZEBUV and hold, continue climb-in-hold to 9000.	
AWOS-3P 129.05	ANCHORAGE CENTER 121.4	GCO 130.3	CTAF 122.9 <div></div>



5 NM Holding Pattern		ZEBUV	2800		9000	ZEBUV
			↑		↶	△
5000		← 303°	123° →	136°	3100	WODPU 4.7 NM to UGWIX
				3.00° TCH 45		1.5 NM to UGWIX
				109°	1800	UGWIX
				6.4 NM	4.1 NM	3.2 NM 1.5 NM 0.5 NM
CATEGORY	A	B	C	D		
LNAV MDA	780-1	667 (700-1)	780-1 7/8	667 (700-1 7/8)		
CIRCLING	1020-1 1/4 891 (900-1 1/4)	1200-1 1/2 1071 (1100-1 1/2)	1600-3 1471 (1500-3)	1960-3 1831 (1900-3)		



AK, 31 DEC 2020 to 25 FEB 2021

AK, 31 DEC 2020 to 25 FEB 2021