

LOC I-LJU 108.5	APP CRS 245°	Rwy Idg 11800 TDZE 624 Apt Elev 633
---------------------------	------------------------	--

ILS or LOC RWY 25
OSCODA-WURTSMITH (OSC)

DME required.

▼

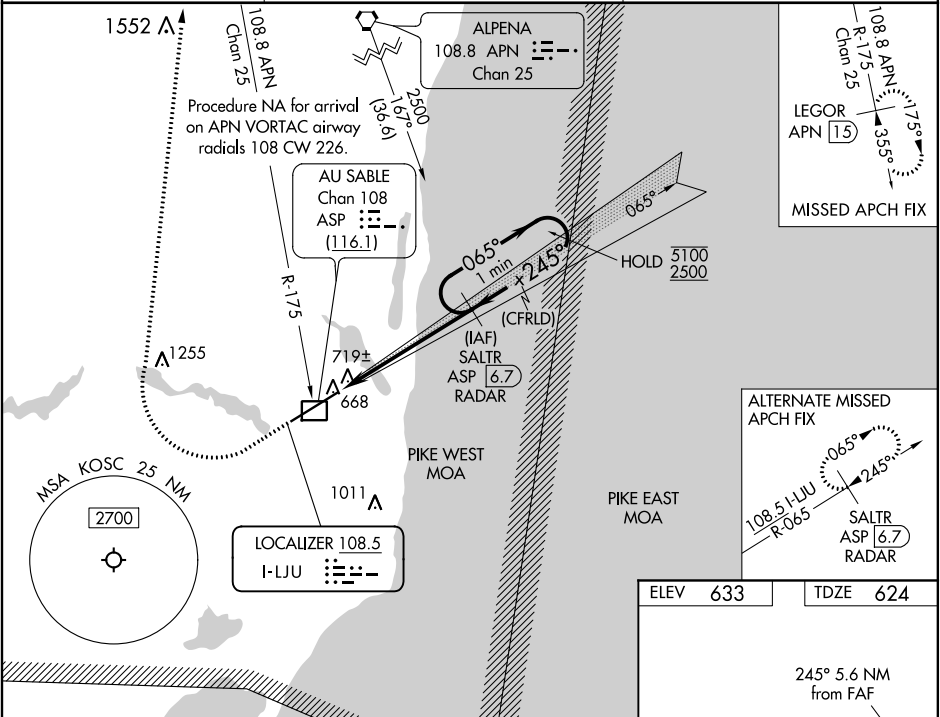
NA

Circling NA southeast of Rwy 7-25. For inop ALS, increase S-LOC Cats C and D visibility to 1 SM. DME from ASP DME. Simultaneous reception of I-LJU and ASP DME required.

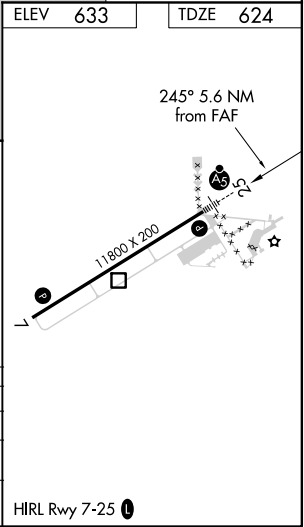
MALSR

MISSED APPROACH: Climb to 1300 then climbing right turn to 3000 on heading 030° and on APN VORTAC R-175 to LEGOR/APN 15 DME and hold.

AWOS-3 118.7	MINNEAPOLIS CENTER 125.475 269.45	UNICOM 123.0 (CTAF) 1
------------------------	---	---------------------------------



<div>1300 ↑</div> <div>3000 hdg 030° APN R-175</div> <div>LEGOR APN 15</div>		VGSI and ILS glidepath not coincident (VGSI Angle 3.00/TCH 72).		One Minute Holding Pattern	
*LOC only.		*ASP 2		SALT ASP 6.7 RADAR	
<div>ASP 1.1</div> <div>0.9 NM</div>		<div>4.7 NM</div>		<div>2500</div> <div>065° → 5100</div> <div>← 245° 2500</div> <div>GS 3.00° TCH 56</div>	
CATEGORY		A	B	C	D
S-ILS 25		824-1/2 200 (200-1/2)			
S-LOC 25		980-1/2 356 (400-1/2)		980-5/8 356 (400-5/8)	
CIRCLING		1140-1 507 (600-1)		1160-1 1/2 527 (600-1 1/2)	1300-2 667 (700-2)



EC-1, 31 DEC 2020 to 28 JAN 2021

EC-1, 31 DEC 2020 to 28 JAN 2021