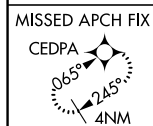




RNAV (GPS) RWY 25

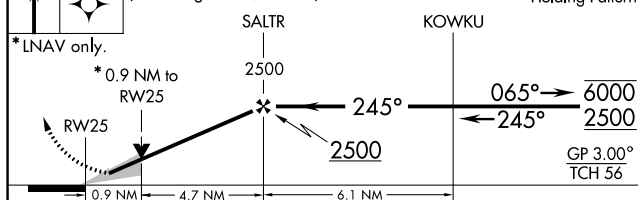
OSCODA-WURTSMITH (OSC)

T Circling NA southeast of Rwy 7-25. Baro-VNAV and VDP NA when using Alpena altimeter setting. For uncompensated Baro-VNAV systems, LNAV/VNAV NA below -16°C or above 54°C. When local altimeter setting not received, use Alpena altimeter setting and increase all DA 96 feet and all MDA 100 feet. Increase LNAV/VNAV all Cats and LNAV and Circling Cat C visibility $\frac{1}{4}$ SM, and Circling Cat D visibility $\frac{1}{2}$ SM. For inop ALS, increase LNAV Cats C and D visibility to 1 SM. For inop ALS when using Alpena altimeter setting, increase LPV all Cats visibility to $\frac{7}{8}$ SM.

MISSED APPROACH:
Climb to 3000 direct
CEDPA and hold.

UNICOM
123.0 (CTAF) **L**

3000	CEDPA	VGSI and RNAV glidepath not coincident (VGSI Angle 3.00/TCH 72).	4 NM
			Holding Pattern



CATEGORY	A	B	C	D
LPV DA	824- $\frac{1}{2}$ 200 (200- $\frac{1}{2}$)			
LNAV/ VNAV DA	1004- $\frac{3}{4}$ 380 (400- $\frac{3}{4}$)			
LNAV MDA	980- $\frac{1}{2}$ 356 (400- $\frac{1}{2}$)		980- $\frac{5}{8}$ 356 (400- $\frac{5}{8}$)	980-1 356 (400-1)
C CIRCLING	1140-1 507 (600-1)		1160-1 $\frac{1}{2}$ 527 (600-1 $\frac{1}{2}$)	1300-2 667 (700-2)

HIRL Rwy 7-25 **L**

DEC-1, 31 DEC 2020 to 28 JAN 2021