

WAAS CH <b>61220</b> <b>W05A</b>	APP CRS <b>047°</b>	Rwy Idg <b>10004</b> TDZE <b>952</b> Apt Elev <b>952</b>
--	------------------------	--

RNAV (GPS) RWY 5L

BATTLE CREEK EXECUTIVE AT KELLOGG FIELD (BTL)

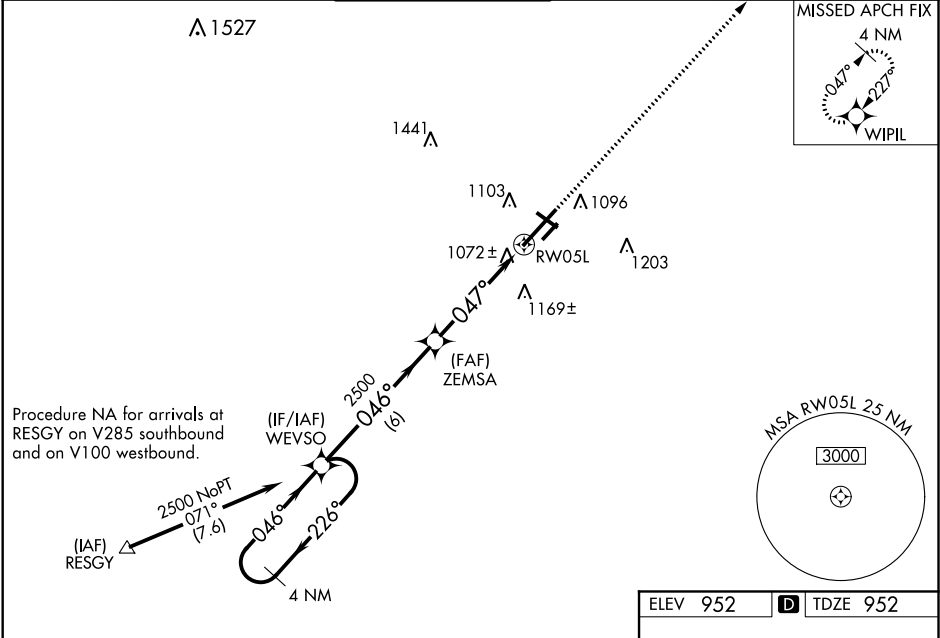
RNP APCH

- ▼ For uncompensated Baro-VNAV systems, LNAV/VNAV NA below -16°C or above 37°C.

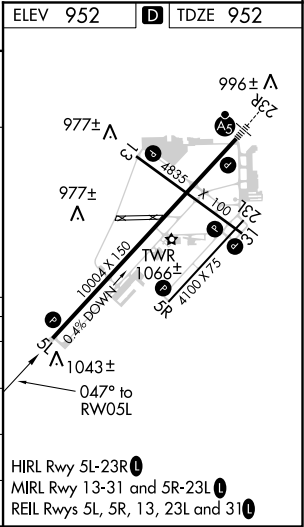
▲ Rwy 5L helicopter visibility reduction below ¾ SM NA. When local altimeter setting not received, use Grand Rapids altimeter setting: increase all DAs 106 feet and all visibilities ¾ SM; increase all MDAs 120 feet and increase LNAV Cats C and D visibility ¾ SM and Circling Cat C visibility ½ SM and Cat D visibility ¼ SM. VDP and Baro-VNAV NA when using Grand Rapids altimeter setting. Circling Rwy 31 NA at night. Circling NA to Rwys 5R and 23L.

MISSED APPROACH:  
Climb to 2500 direct  
WIPIL and hold.

ATIS <b>128.325</b>	GREAT LAKES APP CON ★ <b>119.2 239.25</b>	BATTLE CREEK TOWER ★ <b>126.825</b>	GND CON <b>121.7</b>	UNICOM <b>122.95</b>	CTAF <b>126.825 0</b>
------------------------	--	--	-------------------------	-------------------------	--------------------------



4 NM Holding Pattern		WEVSO	ZEMSA	2500	WIPIL
2500 ← 226°		046° →	2500	047°	
GP 3.00°					
TCH 48					
		6 NM	3.3 NM	1.4	
CATEGORY	A	B	C	D	
LPV DA	1317-1¼		365 (400-1¼)		
LNAV/ VNAV DA	1253-1		301 (400-1)		
LNAV MDA	1440-1	488 (500-1)	1440-1¾	488 (500-1¾)	
CIRCLING	1440-1	1480-1	1520-1½	1520-2	
	488 (500-1)	528 (600-1)	568 (600-1½)	568 (600-2)	



RNAV (GPS) RWY 5L