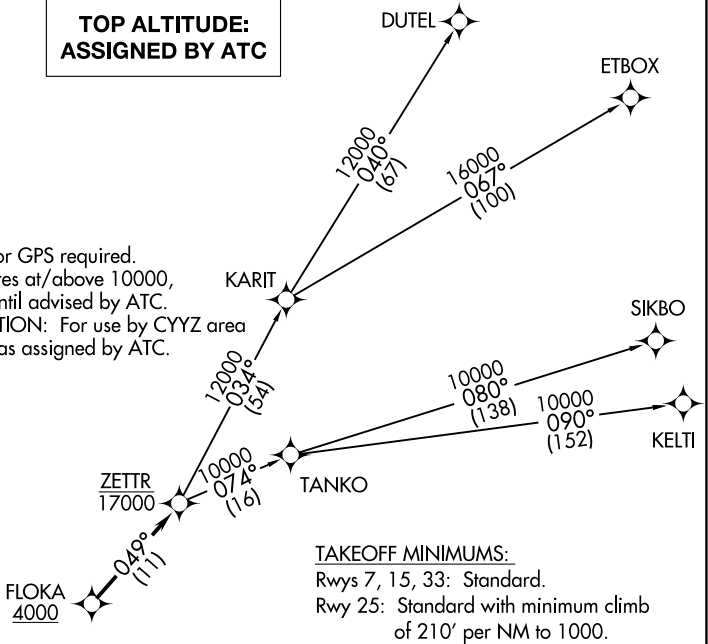


ATIS
124.875
GND CON
121.85
DETROIT CITY TOWER
121.3 257.8
DETROIT DEP CON
134.3 284.0

TOP ALTITUDE:
ASSIGNED BY ATC

NOTE: RNAV 1.
NOTE: RADAR required.
NOTE: DME/DME/IRU or GPS required.
NOTE: Turbojet departures at/above 10000,
maintain 280K until advised by ATC.
NOTE: TANKO TRANSITION: For use by CYYZ area
arrivals only, or as assigned by ATC.



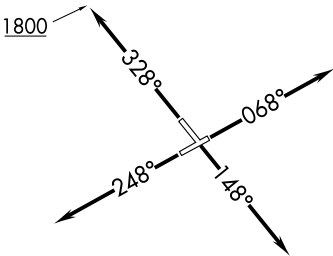
TAKEOFF MINIMUMS:
Rwys 7, 15, 33: Standard.
Rwy 25: Standard with minimum climb
of 210' per NM to 1000.

DEPARTURE ROUTE DESCRIPTION

TAKEOFF RUNWAY 7: Climb on heading 068° or as assigned for RADAR vectors to cross FLOKA at or above 4000, then....
TAKEOFF RUNWAY 15: Climb on heading 148° or as assigned for RADAR vectors to cross FLOKA at or above 4000, then....
TAKEOFF RUNWAY 25: Climb on heading 248° or as assigned for RADAR vectors to cross FLOKA at or above 4000, then....
TAKEOFF RUNWAY 33: Climb on heading 328° to 1800 then as assigned for RADAR vectors to cross FLOKA at or above 4000, then....

....on track 049° to cross ZETTR at or below 17000, then on (transition). Maintain ATC assigned altitude, expect filed altitude 10 minutes after departure.

DUTEL TRANSITION (ZETTR3.DUTEL):
ETBOX TRANSITION (ZETTR3.ETBOX):
KELTI TRANSITION (ZETTR3.KELTI):
SIKBO TRANSITION (ZETTR3.SIKBO):
TANKO TRANSITION (ZETTR3.TANKO):



NOTE: Chart not to scale.