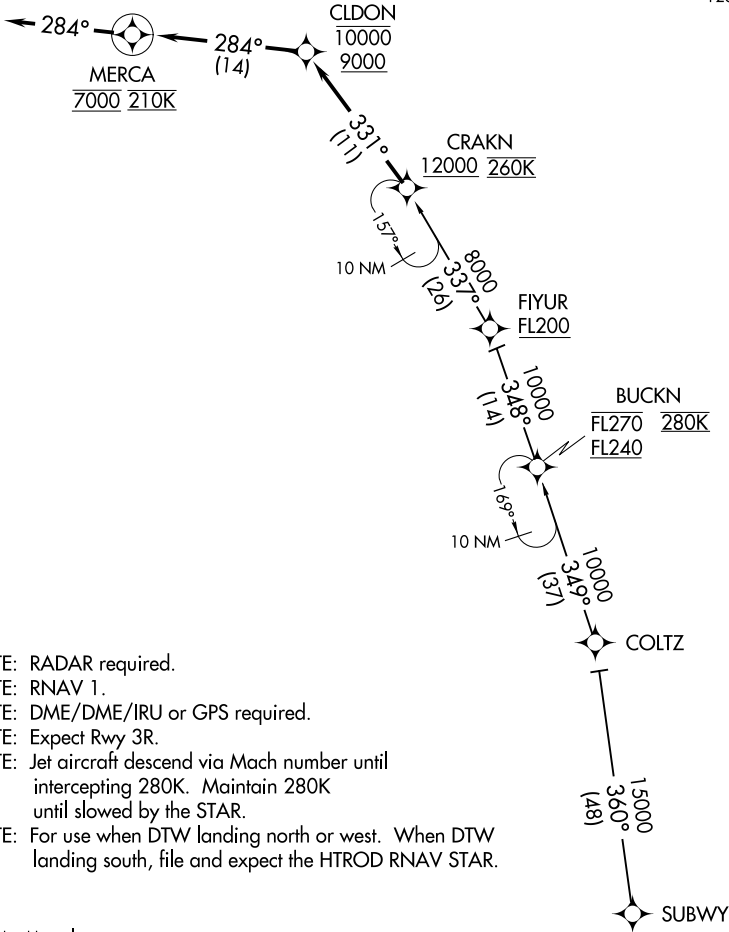


D-ATIS
133.675
DETROIT APP CON
126.225 284.0

Ldg KDTW



ARRIVAL ROUTE DESCRIPTION

SUBWY TRANSITION (SUBWY.CRAKN2)

From CRAKN on track 331° to cross CLDON between 9000 and 10000, then on track 284° to cross MERCA at 7000 and at 210K, then on track 284°. Expect RADAR vectors to final approach course.

LOST COMMUNICATIONS:

From MERCA, execute ILS Rwy 3R approach.