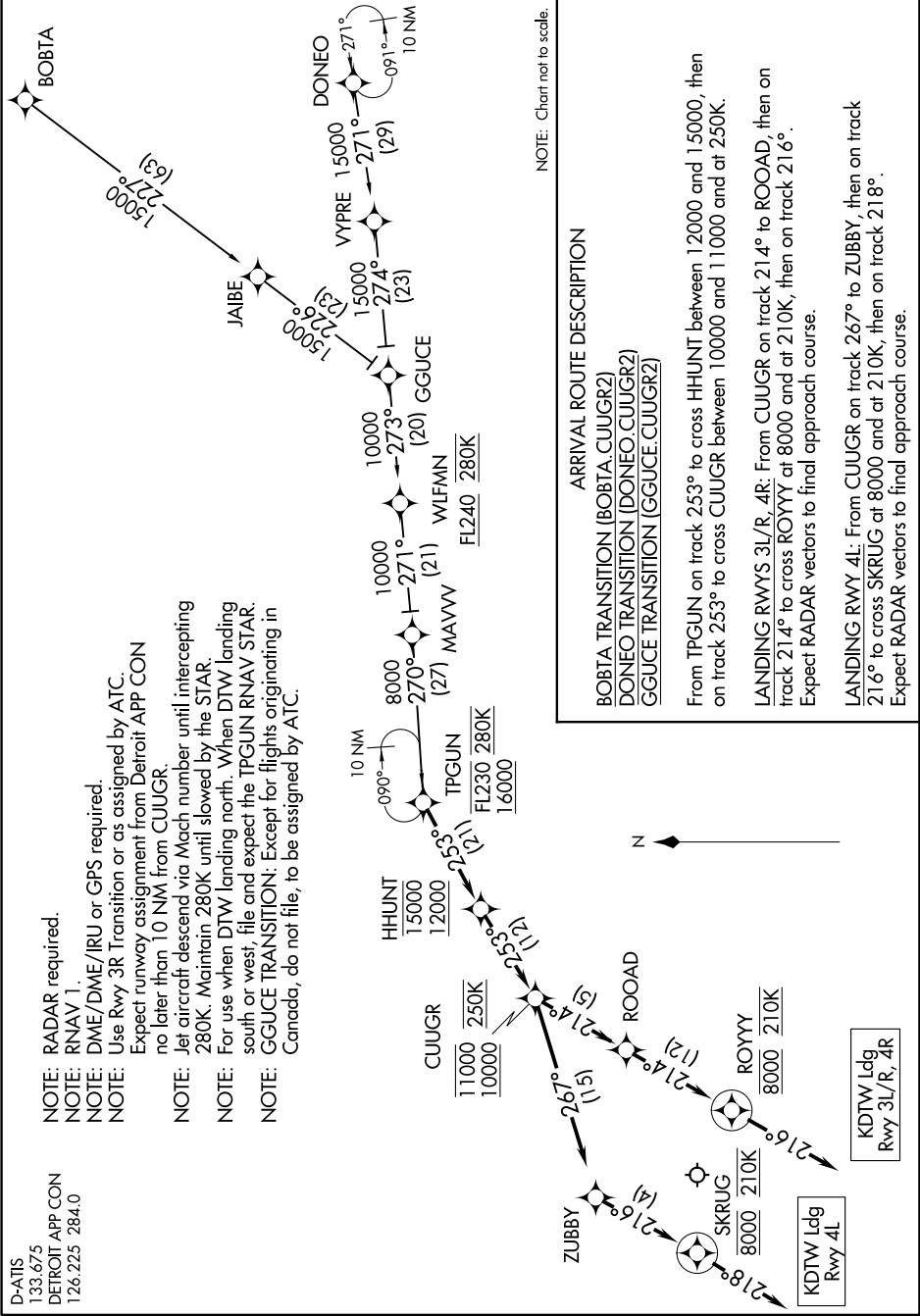


D-ATIS
133.675
DETROIT APP CON
126.225 284.0

- NOTE: RADAR required.
- NOTE: RNAV 1.
- NOTE: DME/DME/IRU or GPS required.
- NOTE: Use Rwy 3R Transition or as assigned by ATC.
- NOTE: Expect runway assignment from Detroit APP CON no later than 10 NM from CUUGR.
- NOTE: Jet aircraft descend via Mach number until intercepting 280K. Maintain 280K until slowed by the STAR.
- NOTE: For use when DTW landing north. When DTW landing south or west, file and expect the TPGUN RNAV STAR.
- NOTE: GGUCE TRANSITION: Except for flights originating in Canada, do not file, to be assigned by ATC.

CUUGR TWO ARRIVAL (RNAV)
(TPGUN.CUUGR2) 100CT19

DETROIT METROPOLITAN WAYNE COUNTY (DTW)
AL-119 (FAA)
DETROIT, MICHIGAN



DETROIT, MICHIGAN
DETROIT METROPOLITAN WAYNE COUNTY (DTW)