

(HANBL.HANBL3) 19339

AL-119 (FAA)

**HANBL THREE ARRIVAL (RNAV) Transition Routes**

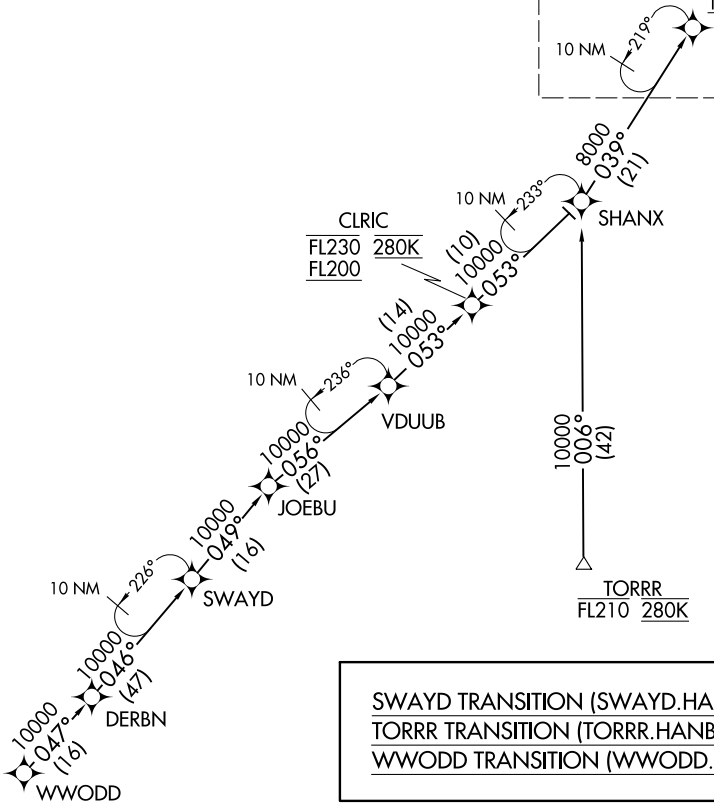
DETROIT METROPOLITAN WAYNE COUNTY (DTW)

DETROIT, MICHIGAN

D-ATIS  
133.675  
DETROIT APP CON  
124.975 284.0

See following page  
for arrival routes

HANBL  
FL210 280K  
17000



- NOTE: RADAR required.  
NOTE: RNAV 1.  
NOTE: DME/DME/IRU or GPS required.  
NOTE: Use Runway 22R transition or as assigned by ATC. Expect runway assignment from Detroit APP CON no later than 10 NM from HEMIE.  
NOTE: For use when DTW landing south or west. When DTW landing north, file and expect the LECTR RNAV STAR.  
NOTE: TORRR Transition for use by CVG/DAY/SDF/LEX terminal area departures at or below FL210 only and ATC use as assigned.

(NARRATIVE ON FOLLOWING PAGE)  
(CONTINUED ON FOLLOWING PAGE)

NOTE: Chart not to scale.

**HANBL THREE ARRIVAL (RNAV) Transition Routes**

(HANBL.HANBL3) 05DEC19

DETROIT METROPOLITAN WAYNE COUNTY (DTW)

DETROIT, MICHIGAN